

PARTS LIST

CAUTION

- The parts identified by the \triangle symbol are important for the safety . Whenever replacing these parts, be sure to use specified ones to secure the safety .
- The parts not indicated in this Parts List and those which are filled with lines --- in the Parts No. columns will not be supplied .
- P. W. Board Ass'y will not be supplied, but those which are filled with the Parts No. in the Parts No. columns will be supplied .

ABBREVIATIONS OF RESISTORS, CAPACITORS AND TOLERANCES

RESISTORS		CAPACITORS	
C R	Carbon Resistor	C CAP.	Ceramic Capacitor
F R	Fusible Resistor	E CAP.	Electrolytic Capacitor
P R	Plate Resistor	M CAP.	Mylar Capacitor
V R	Variable Resistor	CH CAP.	Chip Capacitor
HV R	High Voltage Resistor	HV CAP.	High Voltage Capacitor
MF R	Metal Film Resistor	MF CAP.	Metalized Film Capacitor
MG R	Metal Glazed Resistor	MM CAP.	Metalized Mylar Capacitor
MP R	Metal Plate Resistor	MP CAP.	Metalized Polystyrol Capacitor
OM R	Metal Oxide Film Resistor	PP CAP.	Polypropylene Capacitor
CMF R	Coating Metal Film Resistor	PS CAP.	Polystyrol Capacitor
UNF R	Non-Flammable Resistor	TF CAP.	Thin Film Capacitor
CH V R	Chip Variable Resistor	MPP CAP.	Metalized Polypropylene Capacitor
CH MG R	Chip Metal Glazed Resistor	TAN. CAP.	Tantalum Capacitor
COMP. R	Composition Resistor	CH C CAP.	Chip Ceramic Capacitor
LPTC R	Linear Positive Temperature Coefficient Resistor	BP E CAP.	Bi-Polar Electrolytic Capacitor
		CH AL E CAP.	Chip Aluminum Electrolytic Capacitor
		CH AL BP CAP.	Chip Aluminum Bi-Polar Capacitor
		CH TAN. E CAP.	Chip Tantalum Electrolytic Capacitor
		CH AL BP E CAP.	Chip Tantalum Bi-Polar Electrolytic Capacitor

RESISTORS									
F	G	J	K	M	N	R	H	Z	P
±1%	±2%	±5%	±10%	±20%	±30%	+30% -10%	+50% -10%	+80% -20%	+100% 0%

CONTENTS

USING P.W. BOARD & REMOTE CONTROL UNIT	41
EXPLODED VIEW PARTS LIST-I	41
EXPLODED VIEW-I	41
EXPLODED VIEW PARTS LIST-II	42
EXPLODED VIEW-II	43
PRINTED WIRING BOARD PARTS LIST [AV-21WH3]	
MAIN PW BOARD ASS'Y	44
DIFFERENCE PARTS LIST BETWEEN AV-21WH3 AND AV21WS3/AU	49
PRINTED WIRING BOARD PARTS LIST [AV-21WX3/A]	
MAIN PW BOARD ASS'Y	50
DIFFERENCE PARTS LIST BETWEEN AV21WX3/A AND AV-2178TEE	55
REMOTE CONTROL UNIT PARTS LIST	56
PACKING / PACKING PARTS LIST	57

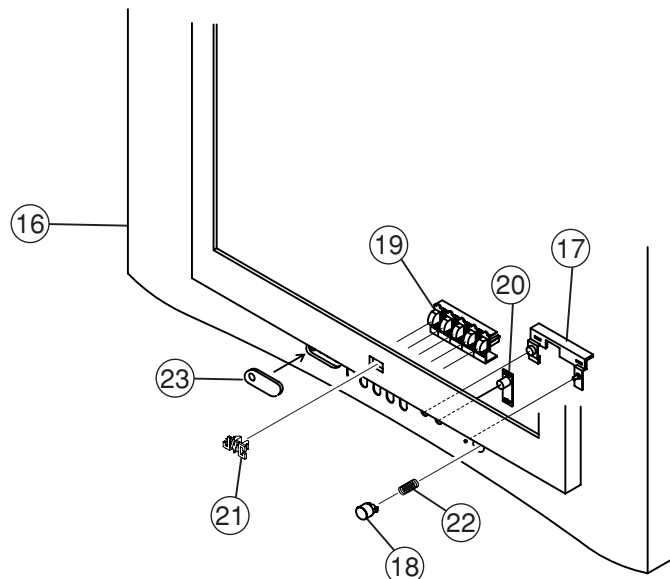
USING P.W. BOARD & REMOTE CONTROL UNIT

P.W.B ASS'Y	Model	AV-21WH3	AV-21WS3/AU	AV-21WX3/A	AV-2178TEE
MAIN PWB (include CRT SOCKET PWB)		SCH-1099A-H2	SCH-1094A-H2	SCH-1077A-H2	SCH-1110A-H2
REMOTE CONTROL UNIT		RM-C1011-1H	RM-C1010-1H	RM-C1014-1H	RM-C1013-1H

EXPLODED VIEW PARTS LIST-I

△ Ref.No.	Part No.	Part Name	Description	Local
16	GG10198-003A-H	FRONT CABI ASS'Y	[AV-21WH3]	
16	GG10198-001A-H	FRONT CABI ASS'Y	[AV-21WS3/AU]	
16	GG10198-002A-H	FRONT CABI ASS'Y	[AV-21WX3/A]	
16	GG10198-010A-H	FRONT CABI ASS'Y	[AV-2178TEE]	
17	GG30042-001B-H	LED LENS		
18	GG30043-001B-H	POWER KNOB		
19	GG20022-001A-H	CONTROL KNOB		
20	GG30044-001B-H	E.E. WINDOW		
21	GG40023-001A-H	JVC MARK		
22	CM35235-003-H	SPRING		
23	GG30046-001B-H	TERMINAL CAP		

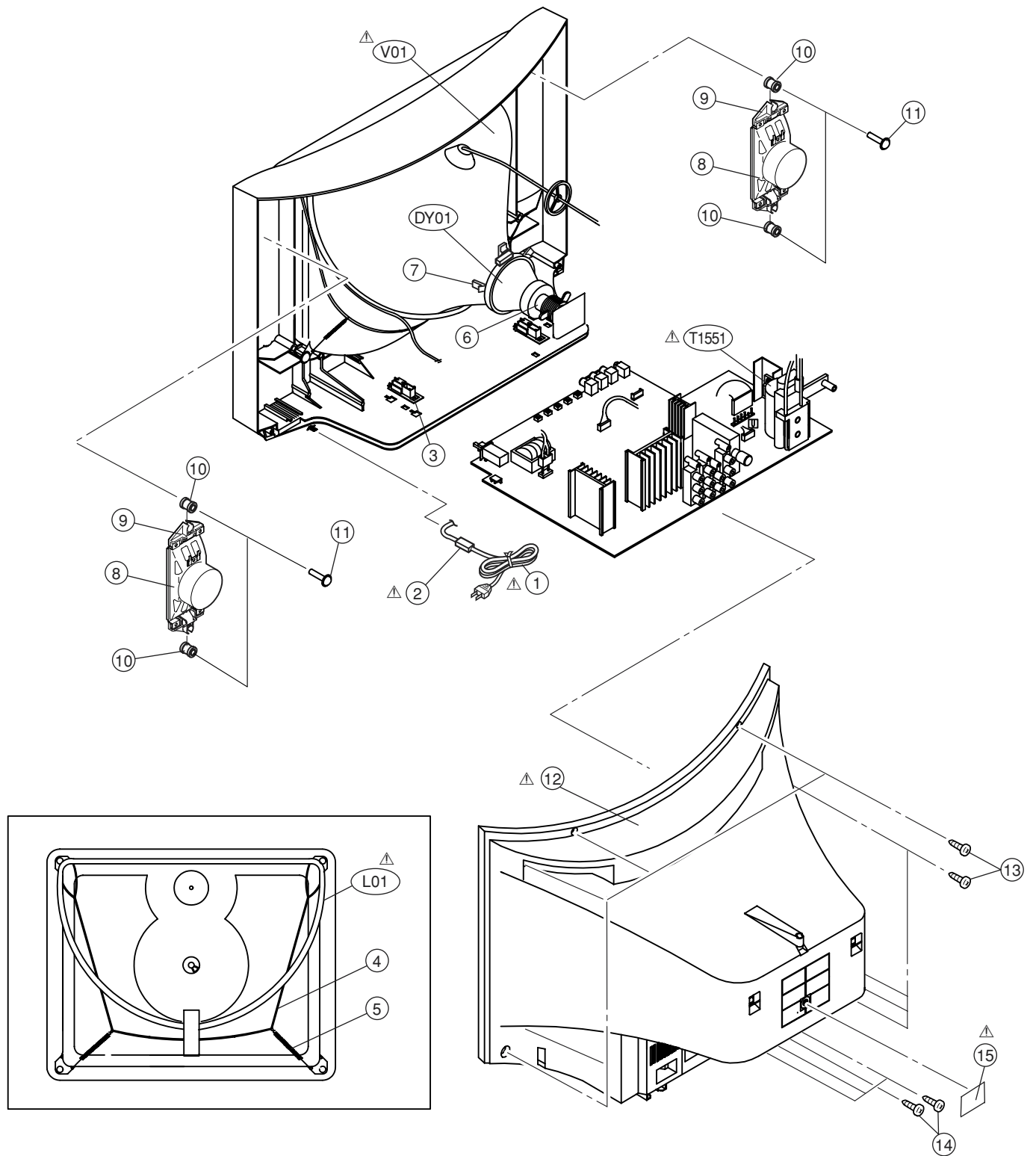
EXPLODED VIEW-I



EXPLODED VIEW PARTS LIST-II

△ Ref.No.	Part No.	Part Name	Description	Local
△ V01	A51LVV896X	PICTURE TUBE		
△ L01	QQW0118-001	DEG COIL	[AV-21WH3, AV-21WX3/A, AV-2178TEE]	
△ L01	QQW0146-001	DEG COIL	[AV-21WS3/AU]	
△ DY01	QQD0082-001	DEFLECTION YOKE		
△ T1551	QQH0137-001	FBT		
△ 1	QMPR370-165-E2	POWER CORD	[AV-21WH3]	
△ 1	QMPG090-165-K2	POWER CORD	[AV-21WS3/AU]	
△ 1	QMPR380-165-K2	POWER CORD	[AV-21WX3/A]	
△ 1	QMPR340-165-K2	POWER CORD	[AV-2178TEE]	
△ 2	CM47005-A01-H	CORD CLAMP		
3	CM36623-B01-H	CHASSIS RAIL	(X2)	
4	CHGB0028-0A	BRAIDED ASS'Y		
5	A48457-3-H	SPRING	(X2)	
6	A75034-B	PC MAGNET		
7	CE40764-00A	WEDGE ASS'Y	(X3)	
8	QAS0114-001	SPEAKER	(X2) SP01, SP02	
9	GG20023-001B-H	SP HOLDER	(X2)	
10	LC40226-003A-H	SPACER	(X4)	
11	LC40317-002A-H	TAPPING SCREW	(X4)	
△ 12	GG10187-002B-H	REAR COVER	[AV-21WH3, AV-21WS3/AU]	
△ 12	GG10187-001B-H	REAR COVER	[AV-21WX3/A, AV-2178TEE]	
13	QYSBSFG4016Z	TAPPING SCREW	(X9)	
14	QYSBSF3010Z	TAPPING SCREW	(X4)	
△ 15	GG20024-001B-H	RATING LABEL		

EXPLODED VIEW-II



PRINTED WIRING BOARD PARTS LIST [AV-21WH3]

MAIN PW BOARD ASS'Y(SCH-1099A-H2)

△ Symbol No.	Part No.	Part Name	Description	Local
RESISTOR				
R1001	NRSA63J-221X	MG R	220Ω 1/16W J	
R1002	NRSA63J-221X	MG R	220Ω 1/16W J	
R1003	NRSA63J-392X	MG R	3.9kΩ 1/16W J	
R1004	NRSA63J-221X	MG R	220Ω 1/16W J	
R1006	NRSA63J-273X	MG R	27kΩ 1/16W J	
R1007	NRSA63J-750X	MG R	75Ω 1/16W J	
R1101	NRSA63J-100X	MG R	10Ω 1/16W J	
R1102	NRSA63J-682X	MG R	6.8kΩ 1/16W J	
R1103	NRSA63J-272X	MG R	2.7kΩ 1/16W J	
R1104	NRSA63J-181X	MG R	180Ω 1/16W J	
R1105	NRSA63J-220X	MG R	22Ω 1/16W J	
R1106	NRSA63J-101X	MG R	100Ω 1/16W J	
R1107	NRSA63J-472X	MG R	4.7kΩ 1/16W J	
R1108	NRSA63J-222X	MG R	2.2kΩ 1/16W J	
R1109	NRSA63J-222X	MG R	2.2kΩ 1/16W J	
R1110	NRSA63J-222X	MG R	2.2kΩ 1/16W J	
R1111	NRSA63J-102X	MG R	1kΩ 1/16W J	
R1112	NRSA63J-103X	MG R	10kΩ 1/16W J	
R1117	NRSA63J-102X	MG R	1kΩ 1/16W J	
R1119	NRSA63J-102X	MG R	1kΩ 1/16W J	
R1120	NRSA63J-471X	MG R	470Ω 1/16W J	
R1150	NRSA63J-331X	MG R	330Ω 1/16W J	
R1151	NRSA63J-222X	MG R	2.2kΩ 1/16W J	
R1152	NRSA63J-121X	MG R	120Ω 1/16W J	
R1153	NRSA63J-122X	MG R	1.2kΩ 1/16W J	
R1154	NRSA63J-181X	MG R	180Ω 1/16W J	
R1301	NRSA63J-222X	MG R	2.2kΩ 1/16W J	
R1302	NRSA63J-222X	MG R	2.2kΩ 1/16W J	
R1303	NRSA63J-562X	MG R	5.6kΩ 1/16W J	
R1304	NRSA63J-222X	MG R	2.2kΩ 1/16W J	
R1305	NRSA63J-222X	MG R	2.2kΩ 1/16W J	
R1306	NRSA63J-562X	MG R	5.6kΩ 1/16W J	
R1351	NRSA63J-151X	MG R	150Ω 1/16W J	
R1352	QRL029J-123	OM R	12kΩ 2W J	
R1353	NRSA63J-182X	MG R	1.8kΩ 1/16W J	
R1354	NRSA63J-331X	MG R	330Ω 1/16W J	
R1355	NRSA63J-101X	MG R	100Ω 1/16W J	
R1356	QRE121J-102Y	C R	1kΩ 1/2W J	
R1357	QRZ0107-152Z	C R	1.5kΩ 1W K	
R1358	QRE121J-272Y	C R	2.7kΩ 1/2W J	
R1359	QRE121J-561Y	C R	560Ω 1/2W J	
R1361	NRSA63J-151X	MG R	150Ω 1/16W J	
R1362	QRL029J-123	OM R	12kΩ 2W J	
R1363	NRSA63J-182X	MG R	1.8kΩ 1/16W J	
R1364	NRSA63J-331X	MG R	330Ω 1/16W J	
R1365	NRSA63J-101X	MG R	100Ω 1/16W J	
R1366	QRE121J-102Y	C R	1kΩ 1/2W J	
R1367	QRZ0107-152Z	C R	1.5kΩ 1W K	
R1368	NRSA63J-332X	MG R	3.3kΩ 1/16W J	
△ R1369	QRZ9017-4R7	F R	4.7Ω 1/4W J	
R1370	NRSA63J-151X	MG R	150Ω 1/16W J	
R1371	QRL029J-123	OM R	12kΩ 2W J	
R1372	NRSA63J-182X	MG R	1.8kΩ 1/16W J	
R1373	NRSA63J-331X	MG R	330Ω 1/16W J	
R1374	NRSA63J-101X	MG R	100Ω 1/16W J	
R1375	QRE121J-102Y	C R	1kΩ 1/2W J	
R1376	QRZ0107-152Z	C R	1.5kΩ 1W K	
R1377	NRSA63J-330X	MG R	33Ω 1/16W J	
R1378	NRSA63J-223X	MG R	22kΩ 1/16W J	
R1379	NRSA63J-103X	MG R	10kΩ 1/16W J	
R1383	QRE121J-394Y	C R	390kΩ 1/2W J	
R1384	NRSA63J-103X	MG R	10kΩ 1/16W J	
R1385	QRE141J-393Y	C R	39kΩ 1/4W J	
R1401	NRSA63J-224X	MG R	220kΩ 1/16W J	
R1403	NRSA63J-0R0X	MG R	0.0Ω 1/16W J	
R1405	NRSA63J-682X	MG R	6.8kΩ 1/16W J	
R1406	NRSA63J-123X	MG R	12kΩ 1/16W J	
R1408	NRSA63J-682X	MG R	6.8kΩ 1/16W J	
R1410	NRSA63J-123X	MG R	12kΩ 1/16W J	
R1411	QRG01GJ-221	OM R	220Ω 1W J	
R1412	QRE121J-1R0Y	C R	1Ω 1/2W J	
R1413	QRX01GJ-2R7	MF R	2.7Ω 1W J	

△ Symbol No.	Part No.	Part Name	Description	Local
RESISTOR				
R1414	QRE121J-120Y	C R	12Ω 1/2W J	
R1425	NRSA63J-683X	MG R	68kΩ 1/16W J	
R1521	NRSA63J-101X	MG R	100Ω 1/16W J	
R1522	NRSA63J-102X	MG R	1kΩ 1/16W J	
R1524	QRL029J-270	OM R	27Ω 2W J	
R1526	QRG01GJ-271	OM R	270Ω 1W J	
R1527	QRL039J-103	OM R	10kΩ 3W J	
R1528	QRX029J-R47	MF R	0.47Ω 2W J	
R1529	QRX029J-R47	MF R	0.47Ω 2W J	
R1531	NRSA63J-222X	MG R	2.2kΩ 1/16W J	
△ R1532	QRZ9017-4R7	F R	4.7Ω 1/4W J	
△ R1540	QRZ9021-4R7	F R	4.7Ω 1W J	
R1541	QRE121J-154Y	C R	150kΩ 1/2W J	
R1542	QRE121J-154Y	C R	150kΩ 1/2W J	
R1543	QRE121J-471Y	C R	470Ω 1/2W J	
R1545	QRE121J-220Y	C R	22Ω 1/2W J	
R1546	QRE121J-822Y	C R	8.2kΩ 1/2W J	
R1591	QRE121J-222Y	C R	2.2kΩ 1/2W J	
R1592	QRZ0225-2R2	UNF R	2.2Ω 2W	
R1593	NRSA63J-102X	MG R	1kΩ 1/16W J	
R1594	QRE121J-183Y	C R	18kΩ 1/2W J	
R1595	NRSA63J-222X	MG R	2.2kΩ 1/16W J	
R1602	NRSA63J-271X	MG R	270Ω 1/16W J	
R1603	NRSA63J-101X	MG R	100Ω 1/16W J	
R1604	NRSA63J-101X	MG R	100Ω 1/16W J	
R1621	NRSA63J-0R0X	MG R	0.0Ω 1/16W J	
R1622	NRSA63J-0R0X	MG R	0.0Ω 1/16W J	
R1624	NRSA63J-101X	MG R	100Ω 1/16W J	
R1625	NRSA63J-101X	MG R	100Ω 1/16W J	
R1626	NRSA63J-102X	MG R	1kΩ 1/16W J	
R1627	NRSA63J-102X	MG R	1kΩ 1/16W J	
R1650	NRSA63J-103X	MG R	10kΩ 1/16W J	
R1651	NRSA63J-822X	MG R	8.2kΩ 1/16W J	
R1654	NRSA63J-103X	MG R	10kΩ 1/16W J	
R1655	NRSA63J-822X	MG R	8.2kΩ 1/16W J	
R1658	QRE121J-2R2Y	C R	2.2Ω 1/2W J	
R1659	QRE121J-2R2Y	C R	2.2Ω 1/2W J	
R1660	NRSA63J-103X	MG R	10kΩ 1/16W J	
R1661	NRSA63J-683X	MG R	68kΩ 1/16W J	
R1662	NRSA63J-333X	MG R	33kΩ 1/16W J	
R1663	NRSA63J-103X	MG R	10kΩ 1/16W J	
R1664	NRSA63J-222X	MG R	2.2kΩ 1/16W J	
R1686	NRSA63J-102X	MG R	1kΩ 1/16W J	
R1687	NRSA63J-103X	MG R	10kΩ 1/16W J	
R1688	NRSA63J-273X	MG R	27kΩ 1/16W J	
R1690	NRSA63J-104X	MG R	100kΩ 1/16W J	
R1698	NRSA63J-104X	MG R	100kΩ 1/16W J	
R1699	NRSA63J-104X	MG R	100kΩ 1/16W J	
R1701	NRSA63J-101X	MG R	100Ω 1/16W J	
R1702	NRSA63J-101X	MG R	100Ω 1/16W J	
R1703	NRSA63J-101X	MG R	100Ω 1/16W J	
R1704	NRSA63J-102X	MG R	1kΩ 1/16W J	
R1705	NRSA63J-102X	MG R	1kΩ 1/16W J	
R1706	NRSA63J-102X	MG R	1kΩ 1/16W J	
R1707	NRSA63J-472X	MG R	4.7kΩ 1/16W J	
R1708	NRSA63J-472X	MG R	4.7kΩ 1/16W J	
R1709	NRSA63J-472X	MG R	4.7kΩ 1/16W J	
R1710	NRSA63J-472X	MG R	4.7kΩ 1/16W J	
R1711	NRSA63J-101X	MG R	100Ω 1/16W J	
R1712	NRSA63J-101X	MG R	100Ω 1/16W J	
R1713	NRSA63J-101X	MG R	100Ω 1/16W J	
R1714	NRSA63J-101X	MG R	100Ω 1/16W J	
R1715	NRSA63J-103X	MG R	10kΩ 1/16W J	
R1716	NRSA63J-103X	MG R	10kΩ 1/16W J	
R1717	NRSA63J-103X	MG R	10kΩ 1/16W J	
R1718	NRSA63J-221X	MG R	220Ω 1/16W J	
R1719	NRSA63J-221X	MG R	220Ω 1/16W J	
R1720	NRSA63J-102X	MG R	1kΩ 1/16W J	
R1721	NRSA63J-221X	MG R	220Ω 1/16W J	
R1722	NRSA63J-221X	MG R	220Ω 1/16W J	
R1723	NRSA63J-221X	MG R	220Ω 1/16W J	
R1724	NRSA63J-221X	MG R	220Ω 1/16W J	

△ Symbol No.	Part No.	Part Name	Description	Local
RESISTOR				
R1725	NRSA63J-103X	MG R	10kΩ 1/16W J	
R1726	NRSA63J-472X	MG R	4.7kΩ 1/16W J	
R1727	NRSA63J-104X	MG R	100kΩ 1/16W J	
R1728	NRSA63J-103X	MG R	10kΩ 1/16W J	
R1729	NRSA63J-470X	MG R	47Ω 1/16W J	
R1730	NRSA63J-223X	MG R	22kΩ 1/16W J	
R1731	NRSA63J-101X	MG R	100Ω 1/16W J	
R1732	NRSA02F-393X	MG R	39kΩ 1/10W F	
R1733	NRSA63J-273X	MG R	27kΩ 1/16W J	
R1734	NRSA63J-391X	MG R	390Ω 1/16W J	
R1735	NRSA63J-104X	MG R	100kΩ 1/16W J	
R1736	NRSA63J-333X	MG R	33kΩ 1/16W J	
R1737	NRSA63J-272X	MG R	2.7kΩ 1/16W J	
R1738	NRSA63J-0R0X	MG R	0.0Ω 1/16W J	
R1739	NRSA63J-101X	MG R	100Ω 1/16W J	
R1740	NRSA63J-101X	MG R	100Ω 1/16W J	
R1741	NRSA63J-101X	MG R	100Ω 1/16W J	
R1742	NRSA63J-0R0X	MG R	0.0Ω 1/16W J	
R1743	NRSA63J-681X	MG R	680Ω 1/16W J	
R1744	NRSA63J-561X	MG R	560Ω 1/16W J	
R1745	NRSA63J-105X	MG R	1MΩ 1/16W J	
R1746	NRSA63J-333X	MG R	33kΩ 1/16W J	
R1747	NRSA63J-103X	MG R	10kΩ 1/16W J	
R1748	NRSA02J-475X	MG R	4.7MΩ 1/10W J	
R1749	NRSA02J-475X	MG R	4.7MΩ 1/10W J	
R1750	NRSA63J-0R0X	MG R	0.0Ω 1/16W J	
R1755	NRSA63J-101X	MG R	100Ω 1/16W J	
R1756	NRSA63J-101X	MG R	100Ω 1/16W J	
R1757	NRSA63J-222X	MG R	2.2kΩ 1/16W J	
R1758	NRSA63J-222X	MG R	2.2kΩ 1/16W J	
R1760	NRSA63J-682X	MG R	6.8kΩ 1/16W J	
R1770	QRE121J-271Y	C R	270Ω 1/2W J	
R1771	NRSA63J-102X	MG R	1kΩ 1/16W J	
R1772	QRE121J-271Y	C R	270Ω 1/2W J	
R1773	NRSA63J-102X	MG R	1kΩ 1/16W J	
R1775	NRSA63J-332X	MG R	3.3kΩ 1/16W J	
R1776	NRSA63J-392X	MG R	3.9kΩ 1/16W J	
R1777	NRSA63J-392X	MG R	3.9kΩ 1/16W J	
R1779	NRSA63J-272X	MG R	2.7kΩ 1/16W J	
R1780	NRSA63J-471X	MG R	470Ω 1/16W J	
R1781	NRSA63J-122X	MG R	1.2kΩ 1/16W J	
R1782	NRSA63J-181X	MG R	180Ω 1/16W J	
R1783	NRSA63J-221X	MG R	220Ω 1/16W J	
R1784	NRSA63J-331X	MG R	330Ω 1/16W J	
R1785	NRSA63J-471X	MG R	470Ω 1/16W J	
R1801	NRSA63J-750X	MG R	75Ω 1/16W J	
R1802	NRSA63J-750X	MG R	75Ω 1/16W J	
R1803	NRSA63J-333X	MG R	33kΩ 1/16W J	
R1804	NRSA63J-750X	MG R	75Ω 1/16W J	
R1805	NRSA63J-750X	MG R	75Ω 1/16W J	
R1806	NRSA63J-750X	MG R	75Ω 1/16W J	
R1807	NRSA63J-750X	MG R	75Ω 1/16W J	
R1808	NRSA63J-823X	MG R	82kΩ 1/16W J	
R1809	NRSA63J-391X	MG R	390Ω 1/16W J	
R1810	NRSA63J-823X	MG R	82kΩ 1/16W J	
R1811	NRSA63J-391X	MG R	390Ω 1/16W J	
R1812	NRSA63J-104X	MG R	100kΩ 1/16W J	
R1813	NRSA63J-222X	MG R	2.2kΩ 1/16W J	
R1815	NRSA63J-101X	MG R	100Ω 1/16W J	
R1817	NRSA63J-101X	MG R	100Ω 1/16W J	
R1818	NRSA63J-222X	MG R	2.2kΩ 1/16W J	
R1819	NRSA63J-101X	MG R	100Ω 1/16W J	
R1820	NRSA63J-101X	MG R	100Ω 1/16W J	
R1821	NRSA63J-222X	MG R	2.2kΩ 1/16W J	
R1823	NRSA63J-101X	MG R	100Ω 1/16W J	
R1824	NRSA63J-222X	MG R	2.2kΩ 1/16W J	
R1826	NRSA63J-101X	MG R	100Ω 1/16W J	
R1829	NRSA63J-750X	MG R	75Ω 1/16W J	
R1830	NRSA63J-222X	MG R	2.2kΩ 1/16W J	
R1831	NRSA63J-222X	MG R	2.2kΩ 1/16W J	
R1832	NRSA63J-122X	MG R	1.2kΩ 1/16W J	
R1833	NRSA63J-102X	MG R	1kΩ 1/16W J	

△ Symbol No.	Part No.	Part Name	Description	Local
RESISTOR				
R1834	NRSA63J-562X	MG R	5.6kΩ 1/16W J	
R1835	NRSA63J-562X	MG R	5.6kΩ 1/16W J	
R1836	NRSA63J-750X	MG R	75Ω 1/16W J	
R1837	NRSA63J-101X	MG R	100Ω 1/16W J	
R1838	QRK126J-121X	UNF R	120Ω 1/2W J	
R1839	QRE121J-221Y	C R	220Ω 1/2W J	
R1840	QRE121J-221Y	C R	220Ω 1/2W J	
R1841	NRSA63J-0R0X	MG R	0.0Ω 1/16W J	
R1842	NRSA63J-0R0X	MG R	0.0Ω 1/16W J	
R1843	NRSA63J-821X	MG R	820Ω 1/16W J	
R1844	NRSA63J-222X	MG R	2.2kΩ 1/16W J	
R1845	NRSA63J-102X	MG R	1kΩ 1/16W J	
R1846	NRSA63J-222X	MG R	2.2kΩ 1/16W J	
R1847	NRSA63J-103X	MG R	10kΩ 1/16W J	
R1848	NRSA63J-471X	MG R	470Ω 1/16W J	
R1849	NRSA63J-221X	MG R	220Ω 1/16W J	
R1880	NRSA63J-202X	MG R	2kΩ 1/16W J	
R1881	NRSA63J-103X	MG R	10kΩ 1/16W J	
R1882	NRSA63J-471X	MG R	470Ω 1/16W J	
R1883	NRSA63J-181X	MG R	180Ω 1/16W J	
R1902	QRF154K-2R2	UNF R	2.2Ω 15W K	
R1904	QRE121J-681Y	C R	680Ω 1/2W J	
R1905	QRM034J-R15	MP R	0.15Ω 3W J	
R1907	NRSA63J-563X	MG R	56kΩ 1/16W J	
R1908	QRL039J-333	OM R	33kΩ 3W J	
R1909	QRE121J-474Y	C R	470kΩ 1/2W J	
R1910	QRE121J-472Y	C R	4.7kΩ 1/2W J	
R1911	QRE121J-332Y	C R	3.3kΩ 1/2W J	
R1912	NRSA63J-152X	MG R	1.5kΩ 1/16W J	
△ R1915	QRZ0111-474	C R	470kΩ 1W K	
R1952	NRSA63J-332X	MG R	3.3kΩ 1/16W J	
R1953	NRSA63J-101X	MG R	100Ω 1/16W J	
R1957	QRE121J-6R8Y	C R	6.8Ω 1/2W J	
R1960	NRSA63J-391X	MG R	390Ω 1/16W J	
R1961	QRL029J-223	OM R	22kΩ 2W J	
R1962	NRSA63J-561X	MG R	560Ω 1/16W J	
R1963	QRE121J-103Y	C R	10kΩ 1/2W J	
R1964	NRSA63J-473X	MG R	47kΩ 1/16W J	
R1965	NRSA63J-0R0X	MG R	0.0Ω 1/16W J	
R1966	NRSA63J-682X	MG R	6.8kΩ 1/16W J	
R1967	NRSA63J-473X	MG R	47kΩ 1/16W J	
R1970	NRSA63J-153X	MG R	15kΩ 1/16W J	
R1971	NRSA63J-183X	MG R	18kΩ 1/16W J	
R1972	NRSA63J-391X	MG R	390Ω 1/16W J	
△ R1991	QRZ9046-825Z	C R	8.2MΩ 1W J	
CAPACITOR				
C1001	NCB31HK-103X	C CAP.	0.01μF 50V K	
C1002	QETN1HM-106Z	E CAP.	10μF 50V M	
C1003	QFV71HJ-104Z	MF CAP.	0.1μF 50V J	
C1004	QETN1CM-477Z	E CAP.	470μF 16V M	
C1005	NCB31HK-222X	C CAP.	2200pF 50V K	
C1006	QETN1CM-336Z	E CAP.	33μF 16V M	
C1007	NCB31HK-103X	C CAP.	0.01μF 50V K	
C1101	NCB31HK-472X	C CAP.	4700pF 50V K	
C1102	NCB31HK-472X	C CAP.	4700pF 50V K	
C1103	NCB31HK-472X	C CAP.	4700pF 50V K	
C1104	NCB31HK-472X	C CAP.	4700pF 50V K	
C1105	NCB31HK-472X	C CAP.	4700pF 50V K	
C1106	NDC21HJ-180X	C CAP.	18pF 50V J	
C1107	NCB31HK-103X	C CAP.	0.01μF 50V K	
C1108	NCB31HK-472X	C CAP.	4700pF 50V K	
C1109	QETN1HM-106Z	E CAP.	10μF 50V M	
C1150	NCB31HK-472X	C CAP.	4700pF 50V K	
C1151	NCB31HK-472X	C CAP.	4700pF 50V K	
C1308	NCB31HK-103X	C CAP.	0.01μF 50V K	
C1310	NRSA63J-0R0X	MG R	0.0Ω 1/16W J	
C1350	NDC21HJ-471X	C CAP.	470pF 50V J	
C1351	NDC21HJ-561X	C CAP.	560pF 50V J	
C1352	QETN2EM-475Z	E CAP.	4.7μF 250V M	
C1353	QETN1HM-107Z	E CAP.	100μF 50V M	

△ Symbol No.	Part No.	Part Name	Description	Local
CAPACITOR				
C1354	QETN1HM-105Z	E CAP.	1μF 50V M	
C1360	NDC21HJ-471X	C CAP.	470pF 50V J	
C1361	NDC31HJ-561X	C CAP.	560pF 50V J	
C1370	NDC21HJ-471X	C CAP.	470pF 50V J	
C1371	NDC31HJ-681X	C CAP.	680pF 50V J	
C1372	NRSA63J-273X	MG R	27kΩ 1/16W J	
C1374	QCZ0364-222	C CAP.	2200pF	
C1375	QETN1CM-477Z	E CAP.	470μF 16V M	
C1401	QETN1HM-105Z	E CAP.	1μF 50V M	
C1402	QCB31HK-682Z	C CAP.	6800pF 50V K	
C1403	QEHR1VM-227Z	E CAP.	220μF 35V M	
C1406	QFLC2AJ-683Z	M CAP.	0.068μF 100V J	
C1407	QCS32HJ-180Z	C CAP.	18pF 500V J	
C1408	QFV71HJ-184Z	MF CAP.	0.18μF 50V J	
C1411	NCF21HZ-334X	C CAP.	0.33μF 50V Z	
C1412	NCF21HZ-334X	C CAP.	0.33μF 50V Z	
C1413	QFLC2AJ-563Z	M CAP.	0.056μF 100V J	
C1422	QEHQ1VM-108	E CAP.	1000μF 35V M	
C1521	QETN1VM-476Z	E CAP.	47μF 35V M	
C1522	QFLC1HJ-332Z	M CAP.	3300pF 50V J	
C1523	QFLC1HJ-223Z	M CAP.	0.022μF 50V J	
C1524	QFZ0200-632	MPP CAP.	6300pF 1.5kVH±3%	
C1525	QFZ0196-382	MPP CAP.	3800pF 1.5kVH±3%	
C1526	QFP32GJ-393	PP CAP.	0.039μF 400V J	
C1527	QFZ0199-124	MPP CAP.	0.12μF AC250V J	
C1528	QFZ0199-124	MPP CAP.	0.12μF AC250V J	
C1529	QEHR2EM-475Z	E CAP.	4.7μF 250V M	
C1530	QCB32HK-561Z	C CAP.	560pF 500V K	
C1531	QEHR1EM-108Z	E CAP.	1000μF 25V M	
C1533	QEHR1EM-108Z	E CAP.	1000μF 25V M	
C1535	QCB32HK-101Z	C CAP.	100pF 500V K	
C1536	QFLC1HJ-103Z	M CAP.	0.01μF 50V J	
C1540	QFV71HJ-104Z	MF CAP.	0.1μF 50V J	
C1541	QETN2EM-226Z	E CAP.	22μF 250V M	
C1542	QETN2EM-226Z	E CAP.	22μF 250V M	
C1550	NCB31CK-104X	C CAP.	0.1μF 16V K	
C1591	QETN1AM-107Z	E CAP.	100μF 10V M	
C1592	QEZ0203-107	E CAP.	100μF 160V M	
C1593	QETN1EM-476Z	E CAP.	47μF 25V M	
C1602	NCB31HK-103X	C CAP.	0.01μF 50V K	
C1603	QETN1CM-107Z	E CAP.	100μF 16V M	
C1604	NCB31CK-104X	C CAP.	0.1μF 16V K	
C1606	NDC31HJ-2R0X	C CAP.	2.0pF 50V J	
C1607	NDC31HJ-2R0X	C CAP.	2.0pF 50V J	
C1608	NCB31HK-103X	C CAP.	0.01μF 50V K	
C1609	NCB31HK-103X	C CAP.	0.01μF 50V K	
C1610	QETN1HM-106Z	E CAP.	10μF 50V M	
C1611	NCB31CK-104X	C CAP.	0.1μF 16V K	
C1612	QETN1HM-106Z	E CAP.	10μF 50V M	
C1613	NCB31CK-104X	C CAP.	0.1μF 16V K	
C1615	QETN1HM-106Z	E CAP.	10μF 50V M	
C1616	NCB31CK-104X	C CAP.	0.1μF 16V K	
C1617	QETN1HM-106Z	E CAP.	10μF 50V M	
C1619	NCB31CK-104X	C CAP.	0.1μF 16V K	
C1620	QETN1HM-106Z	E CAP.	10μF 50V M	
C1621	NCB31HK-102X	C CAP.	1000pF 50V K	
C1622	NCB31HK-102X	C CAP.	1000pF 50V K	
C1625	QETN1HM-475Z	E CAP.	4.7μF 50V M	
C1626	QETN1HM-475Z	E CAP.	4.7μF 50V M	
C1628	NCB31HK-472X	C CAP.	4700pF 50V K	
C1629	NCB31EK-104X	C CAP.	0.1μF 25V K	
C1630	QETN1HM-475Z	E CAP.	4.7μF 50V M	
C1631	NCB31EK-104X	C CAP.	0.1μF 25V K	
C1632	QETN1HM-475Z	E CAP.	4.7μF 50V M	
C1633	QETN1HM-475Z	E CAP.	4.7μF 50V M	
C1634	QETN1HM-475Z	E CAP.	4.7μF 50V M	
C1635	QETN1HM-107Z	E CAP.	100μF 50V M	
C1636	QETN1HM-475Z	E CAP.	4.7μF 50V M	
C1637	QETN1HM-475Z	E CAP.	4.7μF 50V M	
C1638	NCB31EK-104X	C CAP.	0.1μF 25V K	
C1639	NCF21CZ-105X	C CAP.	1μF 16V Z	
C1640	QETN1HM-475Z	E CAP.	4.7μF 50V M	

△ Symbol No.	Part No.	Part Name	Description	Local
CAPACITOR				
C1641	NCB31EK-104X	C CAP.	0.1μF 25V K	
C1642	NCB31HK-472X	C CAP.	4700pF 50V K	
C1644	QETN1HM-475Z	E CAP.	4.7μF 50V M	
C1645	QETN1HM-475Z	E CAP.	4.7μF 50V M	
C1650	QEHR1HM-106Z	E CAP.	10μF 50V M	
C1651	QEHR1VM-476Z	E CAP.	47μF 35V M	
C1652	QETN1HM-106Z	E CAP.	10μF 50V M	
C1655	QEHQ1VM-108	E CAP.	1000μF 35V M	
C1656	QEHQ1VM-108	E CAP.	1000μF 35V M	
C1659	NCF21HZ-224X	C CAP.	0.22μF 50V Z	
C1660	NCF21HZ-224X	C CAP.	0.22μF 50V Z	
C1661	NCF21HZ-224X	C CAP.	0.22μF 50V Z	
C1662	QEHR1VM-227Z	E CAP.	220μF 35V M	
C1663	NCF21HZ-224X	C CAP.	0.22μF 50V Z	
C1681	QETN1CM-227Z	E CAP.	220μF 16V M	
C1682	QETN1CM-227Z	E CAP.	220μF 16V M	
C1683	QETN1CM-336Z	E CAP.	33μF 16V M	
C1684	QETN1HM-106Z	E CAP.	10μF 50V M	
C1685	NRSA63J-0R0X	MG R	0.0Ω 1/16W J	
C1686	NRSA63J-0R0X	MG R	0.0Ω 1/16W J	
C1701	QETN1CM-227Z	E CAP.	220μF 16V M	
C1702	QETN1HM-106Z	E CAP.	10μF 50V M	
C1703	NDC31HJ-330X	C CAP.	33pF 50V J	
C1704	NDC31HJ-330X	C CAP.	33pF 50V J	
C1705	NCB31HK-102X	C CAP.	1000pF 50V K	
C1706	NCB21EK-224X	C CAP.	0.22μF 25V K	
C1707	QETN1CM-107Z	E CAP.	100μF 16V M	
C1709	QETN1CM-107Z	E CAP.	100μF 16V M	
C1710	NCB21EK-224X	C CAP.	0.22μF 25V K	
C1711	NCB31CK-104X	C CAP.	0.1μF 16V K	
C1713	NCB31CK-104X	C CAP.	0.1μF 16V K	
C1714	QETN1CM-476Z	E CAP.	47μF 16V M	
C1720	QETN1CM-476Z	E CAP.	47μF 16V M	
C1725	NCB31HK-681X	C CAP.	680pF 50V K	
C1730	NCB21EK-224X	C CAP.	0.22μF 25V K	
C1731	NCB21EK-224X	C CAP.	0.22μF 25V K	
C1732	QETN1CM-107Z	E CAP.	100μF 16V M	
C1733	NCB31CK-104X	C CAP.	0.1μF 16V K	
C1734	NCB31HK-222X	C CAP.	2200pF 50V K	
C1735	NCB31HK-222X	C CAP.	2200pF 50V K	
C1736	QETN1HM-105Z	E CAP.	1μF 50V M	
C1737	QETN1HM-105Z	E CAP.	1μF 50V M	
C1738	NCB31CK-104X	C CAP.	0.1μF 16V K	
C1739	NFV41CJ-104X	MPP CAP.	0.1μF 16V J	
C1740	QETN1HM-225Z	E CAP.	2.2μF 50V M	
C1741	NCB31CK-104X	C CAP.	0.1μF 16V K	
C1742	NCB31CK-104X	C CAP.	0.1μF 16V K	
C1743	QETN1CM-107Z	E CAP.	100μF 16V M	
C1744	NCB31HK-102X	C CAP.	1000pF 50V K	
C1745	NCB31EK-473X	C CAP.	0.047μF 25V K	
C1746	NCB31EK-473X	C CAP.	0.047μF 25V K	
C1747	NCB31EK-473X	C CAP.	0.047μF 25V K	
C1748	QETN1CM-476Z	E CAP.	47μF 16V M	
C1749	QETN1HM-106Z	E CAP.	10μF 50V M	
C1751	NCB31CK-104X	C CAP.	0.1μF 16V K	
C1752	NCB31CK-104X	C CAP.	0.1μF 16V K	
C1753	NCB31CK-104X	C CAP.	0.1μF 16V K	
C1760	NCB31HK-104X	C CAP.	0.1μF 50V K	
C1761	QETN1CM-107Z	E CAP.	100μF 16V M	
C1770	QETN1HM-106Z	E CAP.	10μF 50V M	
C1801	QETN1HM-106Z	E CAP.	10μF 50V M	
C1802	QETN1HM-106Z	E CAP.	10μF 50V M	
C1803	QETN1HM-106Z	E CAP.	10μF 50V M	
C1804	QETN1HM-106Z	E CAP.	10μF 50V M	
C1805	NCB31HK-104X	C CAP.	0.1μF 50V K	
C1806	QFLC1HJ-104Z	M CAP.	0.1μF 50V J	
C1807	NCF31AZ-105X	C CAP.	1μF 10V Z	
C1808	NCF31AZ-105X	C CAP.	1μF 10V Z	
C1809	NCB31HK-103X	C CAP.	0.01μF 50V K	
C1810	NCF31AZ-105X	C CAP.	1μF 10V Z	
C1811	NCB31HK-104X	C CAP.	0.1μF 50V K	
C1812	NCF31AZ-105X	C CAP.	1μF 10V Z	

△	Symbol No.	Part No.	Part Name	Description	Local
CAPACITOR					
	C1813	NCB31HK-103X	C CAP.	0.01μF 50V	K
	C1814	NCB31HK-104X	C CAP.	0.1μF 50V	K
	C1815	NCF31AZ-105X	C CAP.	1μF 10V	Z
	C1817	NCF31AZ-105X	C CAP.	1μF 10V	Z
	C1819	NCB31HK-104X	C CAP.	0.1μF 50V	K
	C1820	NCF31AZ-105X	C CAP.	1μF 10V	Z
	C1821	NCF31AZ-105X	C CAP.	1μF 10V	Z
	C1822	QETN1CM-477Z	E CAP.	470μF 16V	M
	C1823	QETN1CM-107Z	E CAP.	100μF 16V	M
	C1824	QETN1CM-107Z	E CAP.	100μF 16V	M
	C1825	NCB31HK-103X	C CAP.	0.01μF 50V	K
	C1826	NCB31HK-104X	C CAP.	0.1μF 50V	K
	C1827	NCB31HK-103X	C CAP.	0.01μF 50V	K
	C1829	NCB31HK-103X	C CAP.	0.01μF 50V	K
	C1830	NCB31HK-103X	C CAP.	0.01μF 50V	K
	C1831	NCB31HK-103X	C CAP.	0.01μF 50V	K
	C1833	QETN1HM-226Z	E CAP.	22μF 50V	M
	C1834	NDC31HJ-181X	C CAP.	180pF 50V	J
△	C1901	QFZ9075-104	MPP CAP.	0.1μF	
△	C1902	QFZ9075-473	MPP CAP.	0.047μF	
	C1903	QCZ9015-102Z	C CAP.	1000pF AC250V	Z
	C1904	QCZ9015-102Z	C CAP.	1000pF AC250V	Z
	C1905	QCZ9015-102Z	C CAP.	1000pF AC250V	Z
△	C1906	QFZ9072-224	MM CAP.	0.22μF	
	C1907	QEZ0552-227	E CAP.	220μF	
	C1908	QFZ0209-222	MPP CAP.	2200pF	
	C1910	NDC31HJ-471X	C CAP.	470pF 50V	J
	C1911	QEHR1EM-227Z	E CAP.	220μF 25V	M
	C1914	QETN1EM-227Z	E CAP.	220μF 25V	M
	C1915	QFLC1HJ-152Z	M CAP.	1500pF 50V	J
	C1916	NCB31HK-104X	C CAP.	0.1μF 50V	K
	C1952	QCB32HK-471Z	C CAP.	470pF 500V	K
	C1953	QEHQ1VM-108	E CAP.	1000μF 35V	M
	C1954	NCB31HK-102X	C CAP.	1000pF 50V	K
	C1957	QCB32HK-471Z	C CAP.	470pF 500V	K
	C1958	QEHQ1EM-228	E CAP.	2200μF 25V	M
	C1959	QCZ0122-561	C CAP.	560pF 2000V	K
	C1960	QEZ0203-107	E CAP.	100μF 160V	M
	C1961	QETN1HM-225Z	E CAP.	2.2μF 50V	M
	C1962	QETN1HM-106Z	E CAP.	10μF 50V	M
	C1964	QETN1CM-476Z	E CAP.	47μF 16V	M
	C1965	QETN1HM-225Z	E CAP.	2.2μF 50V	M
	C1968	NCB31CK-104X	C CAP.	0.1μF 16V	K
	C1972	QEHR1VM-476Z	E CAP.	47μF 35V	M
	C1973	QEHR1CM-107Z	E CAP.	100μF 16V	M
	C1974	NCB31CK-104X	C CAP.	0.1μF 16V	K
	C1975	QEHR1CM-227Z	E CAP.	220μF 16V	M
	C1976	QEHR1CM-107Z	E CAP.	100μF 16V	M
	C1977	QEHR1AM-477Z	E CAP.	470μF 10V	M
	C1978	NCB31HK-104X	C CAP.	0.1μF 50V	K
	C1980	QETN1CM-107Z	E CAP.	100μF 16V	M
△	C1991	QCZ9079-102	C CAP.	1000pF AC250V	M
△	C1992	QCZ9079-102	C CAP.	1000pF AC250V	M
△	C1993	QCZ9079-102	C CAP.	1000pF AC250V	M
TRANSFORMER					
	T1521	CE40203-00CJ1	DRIVE TRANSF		
△	T1551	QQH0137-001	FB TRANSF		
△	T1901	QQS0165-001	SW TRANSF		
COIL					
	L1001	CE42050-001Z	BEADS CORE		
	L1002	CE42050-001Z	BEADS CORE		
	L1101	QQL2014-R82	COIL	0.82μH	K
	L1104	QQL244K-180Z	COIL	18μH	K
	L1523	QQR1005-004	LINEARITY COIL		
	L1524	QQL2034-320	COIL	32μH	
	L1601	QQL244K-4R7Z	COIL	4.7μH	K
	L1701	QQL244K-100Z	COIL	10μH	K

△	Symbol No.	Part No.	Part Name	Description	Local
COIL					
	L1702	QQL244K-100Z	COIL	10μH	K
	L1731	QQL244J-5R6Z	COIL	5.6μH	J
	L1732	QQL244J-5R6Z	COIL	5.6μH	J
	L1951	QQL2034-460	COIL	46μH	
	L1953	QQL244J-5R6Z	COIL	5.6μH	J
	L1954	QQL244J-5R6Z	COIL	5.6μH	J
DIODE					
	D1101	DAN235K-X	SI. DIODE		
	D1350	1SS244-T2	SI. DIODE		
	D1352	RGP10J-5025-T3	SI. DIODE		
	D1353	MA111-X	SI. DIODE		
	D1354	MA111-X	SI. DIODE		
	D1355	MA111-X	SI. DIODE		
	D1356	MA111-X	SI. DIODE		
	D1357	MA111-X	SI. DIODE		
	D1358	MA111-X	SI. DIODE		
	D1360	1SS244-T2	SI. DIODE		
	D1370	1SS244-T2	SI. DIODE		
	D1372	MA3075/M/-X	ZENER DIODE		
	D1373	MA111-X	SI. DIODE		
	D1374	MA111-X	SI. DIODE		
	D1401	RGP10J-5025-T3	SI. DIODE		
	D1402	MTZJ75-T2	ZENER DIODE		
	D1405	1N4003-T2	SI. DIODE		
	D1408	MA111-X	SI. DIODE		
	D1521	ERB06-15-F1	SI. DIODE		
	D1522	RU3AM-LFC4	SI. DIODE		
	D1523	RGP10J-5025-T3	SI. DIODE		
	D1541	RGP10J-5025-T3	SI. DIODE		
	D1550	MA111-X	SI. DIODE		
	D1551	RGP10J-5025-T3	SI. DIODE		
	D1553	RGP10J-5025-T3	SI. DIODE		
	D1554	RGP10J-5025-T3	SI. DIODE		
	D1592	MA3075/H/-X	ZENER DIODE		
	D1652	MA3330/L/-X	ZENER DIODE		
	D1653	MA3330/L/-X	ZENER DIODE		
	D1655	MA111-X	SI. DIODE		
	D1682	MA111-X	SI. DIODE		
	D1702	MA3024-X	ZENER DIODE		
	D1703	MA3051/M/-X	ZENER DIODE		
	D1704	MA3033-X	ZENER DIODE		
	D1730	MA111-X	SI. DIODE		
	D1731	MA111-X	SI. DIODE		
	D1732	MA111-X	SI. DIODE		
	D1733	MA111-X	SI. DIODE		
	D1760	SLR-342VR-T16	LED		
	D1770	MA111-X	SI. DIODE		
	D1771	P1241-04	PHOTO CONDUCTOR		
	D1801	MA3120/M/-X	ZENER DIODE		
	D1802	MA3120/M/-X	ZENER DIODE		
	D1807	MA3100/M/-X	ZENER DIODE		
	D1808	MA3100/M/-X	ZENER DIODE		
	D1901	GSIB460	BRIDGE DIODE		
	D1903	MTZJ12C-T2	ZENER DIODE		
	D1904	EG01C-T2	SI. DIODE		
	D1906	EG01C-T2	SI. DIODE		
	D1907	MA3150/M/-X	ZENER DIODE		
	D1908	MTZJ27B-T2	ZENER DIODE		
	D1909	MA111-X	SI. DIODE		
	D1910	MA111-X	SI. DIODE		
	D1911	RGP10J-TS-T3	SI. DIODE		
	D1912	1SS133-T2	SI. DIODE		
	D1914	ERC30-02L38	SI. DIODE		
	D1952	ERC30-02L38	SI. DIODE		
	D1954	RGP30B-F1	SI. DIODE		
	D1956	RU3AM-LFC4	SI. DIODE		
	D1964	MA3330/L/-X	ZENER DIODE		
	D1965	1SS133-T2	SI. DIODE		
	D1966	MA3068/M/-X	ZENER DIODE		
	D1968	MA111-X	SI. DIODE		
	D1969	MA111-X	SI. DIODE		


△ Symbol No.	Part No.	Part Name	Description	Local
DIODE				
D1971	MA111-X	SI. DIODE		
TRANSISTOR				
Q1101	2SC5083/L-P/-T	TRANSISTOR		
Q1102	UN2212-X	DIGI TRANSISTOR		
Q1103	UN2212-X	DIGI TRANSISTOR		
Q1104	2SB709A/QR/-X	TRANSISTOR		
Q1105	UN2212-X	DIGI TRANSISTOR		
Q1106	UN2212-X	DIGI TRANSISTOR		
Q1108	2SD601A/QR/-X	TRANSISTOR		
Q1109	2SB709A/QR/-X	TRANSISTOR		
Q1110	UN2212-X	DIGI TRANSISTOR		
Q1111	2SD601A/QR/-X	TRANSISTOR		
Q1150	2SD601A/QR/-X	TRANSISTOR		
Q1301	2SB709A/QR/-X	TRANSISTOR		
Q1302	2SB709A/QR/-X	TRANSISTOR		
Q1350	STC344-T	TRANSISTOR		
Q1351	2SA1321-T	TRANSISTOR		
Q1352	2SB709A/QR/-X	TRANSISTOR		
Q1360	STC344-T	TRANSISTOR		
Q1361	2SA1321-T	TRANSISTOR		
Q1370	STC344-T	TRANSISTOR		
Q1371	2SA1321-T	TRANSISTOR		
Q1374	2SD601A/QR/-X	TRANSISTOR		
Q1375	2SD601A/QR/-X	TRANSISTOR		
Q1376	2SD601A/QR/-X	TRANSISTOR		
Q1521	2SC2655/Y/-T	TRANSISTOR		
Q1522	2SD2634-YD	POW TRANSISTOR		
Q1591	2SA1208/ST/Z1-T	TRANSISTOR		
Q1592	UN2212-X	DIGI TRANSISTOR		
Q1660	2SD601A/QR/-X	TRANSISTOR		
Q1661	2SD601A/QR/-X	TRANSISTOR		
Q1683	2SB709A/QR/-X	TRANSISTOR		
Q1684	2SB709A/QR/-X	TRANSISTOR		
Q1685	DTC323TK-X	DIGI TRANSISTOR		
Q1686	DTC323TK-X	DIGI TRANSISTOR		
Q1701	2SB709A/QR/-X	TRANSISTOR		
Q1702	2SB709A/QR/-X	TRANSISTOR		
Q1703	FMC2A-X	D.TRANSISTOR		
Q1720	2SB709A/QR/-X	TRANSISTOR		
Q1770	2SB709A/QR/-X	TRANSISTOR		
Q1801	DTC323TK-X	DIGI TRANSISTOR		
Q1802	DTC323TK-X	DIGI TRANSISTOR		
Q1803	2SB709A/QR/-X	TRANSISTOR		
Q1804	2SC1740S/QR/-T	TRANSISTOR		
Q1860	2SD601A/QR/-X	TRANSISTOR		
Q1861	2SB709A/QR/-X	TRANSISTOR		
Q1862	2SB709A/QR/-X	TRANSISTOR		
Q1952	2SD601A/QR/-X	TRANSISTOR		
Q1953	2SD601A/QR/-X	TRANSISTOR		
Q1954	2SD601A/QR/-X	TRANSISTOR		
IC				
IC1401	AN5522	I.C(MONO-ANA)		
IC1601	MSP3417G-X	I.C(MONO-ANA)		
IC1602	NJW1138M-X	I.C(MONO-ANA)		
IC1650	AN5277	I.C(MONO-ANA)		
IC1701	TDA9386N22S0866	I.C(MICRO-COMP)		
IC1702	AT24C08-21WS3	I.C(MEMORY-OTH)	(SERVICE)	
IC1760	GP1UM281QK	IR DETECT UNIT		
IC1801	MM1492AF	I.C(MONO-ANA)		
IC1901	STR-F6709A/F7	I.C(HYBRID)		
IC1951	SE135N	I.C(HYBRID)		
IC1972	R1141Q331B-X	REGULATE		
IC1974	AN80T36	REG IC		

△ Symbol No.	Part No.	Part Name	Description	Local
OTHERS				
	LC30114-001C-H	LED HOLDER		
	CM35921-005-H	CDS HOLDER		
CF1106	QAX0639-001Z	C TRAP		
CL1001	QZW0027-002	WIRE CLAMP		
CL1002	QZW0027-001	WIRE CLAMP		
CL1003	QZW0027-004	WIRE CLAMP		
△ CP1951	ICP-N75-Y	IC PROTECTOR		
△ CP1953	ICP-N75-Y	IC PROTECTOR		
△ F1901	QMF51E2-4R0J4	FUSE		
FC1901	CEMG002-001Z	FUSE CLIP		
J1770	QNS0155-001	3.5 JACK		
J1771	QNN0282-003	PIN JACK		
J1772	QNN0282-002	PIN JACK		
J1773	QNN0282-001	PIN JACK		
J1801	QNZ0454-001	AV JACK		
J1802	QNN0349-002	PIN JACK		
J1803	QNN0348-001	PIN JACK		
J1804	QNN0349-001	PIN JACK		
K1103	QQR1113-001Z	FERRITE BEADS		
K1104	QQR1113-001Z	FERRITE BEADS		
K1106	QQR1113-001Z	FERRITE BEADS		
K1701	QQR1113-001Z	FERRITE BEADS		
K1902	QQR1114-001Z	FERRITE BEADS		
K1903	QQR1114-001Z	FERRITE BEADS		
K1951	QQR1113-001Z	FERRITE BEADS		
K1954	QQR1113-001Z	FERRITE BEADS		
K1955	QQR1214-001Y	FERRITE BEADS		
△ LF1901	QQR0673-004	LINE FILTER		
△ LF1902	QQR1035-002	LINE FILTER		
△ PC1901	PC123F2	IC(PHOTO COUPLE)		
△ RY1901	QSK0092-001	RELAY		
S1780	QSW0619-003Z	TACT SWITCH		MENU
S1781	QSW0619-003Z	TACT SWITCH		CH-
S1782	QSW0619-003Z	TACT SWITCH		CH+
S1783	QSW0619-003Z	TACT SWITCH		VOL-
S1784	QSW0619-003Z	TACT SWITCH		VOL+
△ S1901	QSW0846-001	PUSH SWITCH		POWER
SF1101	QAX0663-001	SAW FILTER		
SF1102	QAX0731-001	SAW FILTER		
△ SK1351	QNZ0537-001	CRT SOCKET		
TH1901	QAD0134-4R5	P THERMISTOR		
TU1001	QAU0185-005	TUNER		
△ VA1901	QAF0052-621	ZNR		
W1008	NRSA63J-0R0X	MG R	0.0Ω	1/16W J
W1010	NRSA63J-0R0X	MG R	0.0Ω	1/16W J
W1052	NRSA63J-0R0X	MG R	0.0Ω	1/16W J
W1071	NRSA63J-0R0X	MG R	0.0Ω	1/16W J
W1096	NRSA63J-0R0X	MG R	0.0Ω	1/16W J
W1239	NRSA63J-0R0X	MG R	0.0Ω	1/16W J
W1257	NRSA63J-0R0X	MG R	0.0Ω	1/16W J
W1307	NRSA63J-0R0X	MG R	0.0Ω	1/16W J
W1309	NRSA63J-0R0X	MG R	0.0Ω	1/16W J
W1317	NRSA63J-0R0X	MG R	0.0Ω	1/16W J
W1322	NRSA63J-0R0X	MG R	0.0Ω	1/16W J
W1325	NRSA63J-0R0X	MG R	0.0Ω	1/16W J
W1326	NRSA63J-0R0X	MG R	0.0Ω	1/16W J
W1330	NRSA63J-0R0X	MG R	0.0Ω	1/16W J
W1333	NRSA63J-0R0X	MG R	0.0Ω	1/16W J
W1375	NRSA63J-0R0X	MG R	0.0Ω	1/16W J
W1379	NRSA63J-0R0X	MG R	0.0Ω	1/16W J
W1388	NRSA63J-0R0X	MG R	0.0Ω	1/16W J
W1417	NRSA63J-0R0X	MG R	0.0Ω	1/16W J
W1418	NRSA63J-0R0X	MG R	0.0Ω	1/16W J
W1430	NRSA63J-0R0X	MG R	0.0Ω	1/16W J
X1601	CE42546-001Z	XTAL		
X1701	QAX0737-001	CRYSTAL		
Y1004	NRSA63J-0R0X	MG R	0.0Ω	1/16W J
Y1005	NRSA63J-0R0X	MG R	0.0Ω	1/16W J
Y1301	NRSA63J-0R0X	MG R	0.0Ω	1/16W J
Y1604	NRSA63J-0R0X	MG R	0.0Ω	1/16W J

DIFFERENCE PARTS LIST BETWEEN AV-21WH3 AND AV-21WS3/AU

In the DIFFERENCE PARTS LIST BETWEEN AV-21WH3 and AV-21WS3/AU, only difference points between these models are written. For other parts not mentioned in the list, please refer to the PARTS LIST(P44 – P48) for the AV-21LWH3.

DIFFERENCE PARTS LIST

	Symbol No.	Part No.		Part Name
		AV-21WH3	AV-21WS3/AU	
		SCH-1099A-H2	SCH-1094A-H2	MAIN PWB
	IC701	TDA9386N22S0866	TDA9365N23S0873	IC

PRINTED WIRING BOARD PARTS LIST [AV-21WX3/A]

MAIN PW BOARD ASS'Y(SCH-1077A-H2)

△	Symbol No.	Part No.	Part Name	Description	Local	△	Symbol No.	Part No.	Part Name	Description	Local
RESISTOR						RESISTOR					
	R1001	NRSA63J-221X	MG R	220Ω	1/16W J		R1377	NRSA63J-330X	MG R	33Ω	1/16W J
	R1002	NRSA63J-221X	MG R	220Ω	1/16W J		R1378	NRSA63J-223X	MG R	22kΩ	1/16W J
	R1003	NRSA63J-392X	MG R	3.9kΩ	1/16W J		R1379	NRSA63J-103X	MG R	10kΩ	1/16W J
	R1004	NRSA63J-221X	MG R	220Ω	1/16W J		R1383	QRE121J-394Y	C R	390kΩ	1/2W J
	R1006	NRSA63J-273X	MG R	27kΩ	1/16W J		R1384	NRSA63J-103X	MG R	10kΩ	1/16W J
	R1007	NRSA63J-750X	MG R	75Ω	1/16W J		R1385	QRE141J-393Y	C R	39kΩ	1/4W J
	R1101	NRSA63J-100X	MG R	10Ω	1/16W J		R1401	NRSA63J-224X	MG R	220kΩ	1/16W J
	R1102	NRSA63J-682X	MG R	6.8kΩ	1/16W J		R1403	NRSA63J-0R0X	MG R	0.0Ω	1/16W J
	R1103	NRSA63J-272X	MG R	2.7kΩ	1/16W J		R1405	NRSA63J-682X	MG R	6.8kΩ	1/16W J
	R1104	NRSA63J-181X	MG R	180Ω	1/16W J		R1406	NRSA63J-123X	MG R	12kΩ	1/16W J
	R1105	NRSA63J-220X	MG R	22Ω	1/16W J		R1408	NRSA63J-682X	MG R	6.8kΩ	1/16W J
	R1106	NRSA63J-101X	MG R	100Ω	1/16W J		R1410	NRSA63J-123X	MG R	12kΩ	1/16W J
	R1107	NRSA63J-472X	MG R	4.7kΩ	1/16W J		R1411	QRG01GJ-221	OM R	220Ω	1W J
	R1108	NRSA63J-222X	MG R	2.2kΩ	1/16W J		R1412	QRE121J-1R0Y	C R	1Ω	1/2W J
	R1109	NRSA63J-222X	MG R	2.2kΩ	1/16W J		R1413	QRX01GJ-2R7	MF R	2.7Ω	1W J
	R1111	NRSA63J-102X	MG R	1kΩ	1/16W J		R1414	QRE121J-120Y	C R	12Ω	1/2W J
	R1112	NRSA63J-103X	MG R	10kΩ	1/16W J		R1425	NRSA63J-683X	MG R	68kΩ	1/16W J
	R1117	NRSA63J-102X	MG R	1kΩ	1/16W J		R1521	NRSA63J-101X	MG R	100Ω	1/16W J
	R1119	NRSA63J-102X	MG R	1kΩ	1/16W J		R1522	NRSA63J-102X	MG R	1kΩ	1/16W J
	R1120	NRSA63J-471X	MG R	470Ω	1/16W J		R1524	QRL029J-270	OM R	27Ω	2W J
	R1130	NRSA63J-472X	MG R	4.7kΩ	1/16W J		R1526	QRG01GJ-271	OM R	270Ω	1W J
	R1131	NRSA63J-471X	MG R	470Ω	1/16W J		R1527	QRL039J-103	OM R	10kΩ	3W J
	R1132	NRSA63J-222X	MG R	2.2kΩ	1/16W J		R1528	QRX029J-R47	MF R	0.47Ω	2W J
	R1133	NRSA63J-152X	MG R	1.5kΩ	1/16W J		R1529	QRX029J-R47	MF R	0.47Ω	2W J
	R1134	NRSA63J-182X	MG R	1.8kΩ	1/16W J		R1531	NRSA63J-222X	MG R	2.2kΩ	1/16W J
	R1135	NRSA63J-561X	MG R	560Ω	1/16W J	△	R1532	QRZ9017-4R7	F R	4.7Ω	1/4W J
	R1136	NRSA63J-472X	MG R	4.7kΩ	1/16W J	△	R1540	QRZ9021-4R7	F R	4.7Ω	1W J
	R1137	NRSA63J-103X	MG R	10kΩ	1/16W J		R1541	QRE121J-154Y	C R	150kΩ	1/2W J
	R1138	NRSA63J-471X	MG R	470Ω	1/16W J		R1542	QRE121J-154Y	C R	150kΩ	1/2W J
	R1139	NRSA63J-222X	MG R	2.2kΩ	1/16W J		R1543	QRE121J-471Y	C R	470Ω	1/2W J
	R1140	NRSA63J-152X	MG R	1.5kΩ	1/16W J		R1545	QRE121J-220Y	C R	22Ω	1/2W J
	R1141	NRSA63J-182X	MG R	1.8kΩ	1/16W J		R1546	QRE121J-822Y	C R	8.2kΩ	1/2W J
	R1142	NRSA63J-561X	MG R	560Ω	1/16W J		R1591	QRE121J-222Y	C R	2.2kΩ	1/2W J
	R1143	NRSA63J-471X	MG R	470Ω	1/16W J		R1592	QRZ0225-2R2	UNF R	2.2Ω	2W J
	R1144	NRSA63J-220X	MG R	22Ω	1/16W J		R1593	NRSA63J-102X	MG R	1kΩ	1/16W J
	R1145	NRSA63J-821X	MG R	820Ω	1/16W J		R1594	QRE121J-183Y	C R	18kΩ	1/2W J
	R1146	NRSA63J-103X	MG R	10kΩ	1/16W J		R1595	NRSA63J-222X	MG R	2.2kΩ	1/16W J
	R1147	NRSA63J-101X	MG R	100Ω	1/16W J		R1621	NRSA63J-0R0X	MG R	0.0Ω	1/16W J
	R1148	NRSA63J-332X	MG R	3.3kΩ	1/16W J		R1622	NRSA63J-0R0X	MG R	0.0Ω	1/16W J
	R1149	NRSA63J-471X	MG R	470Ω	1/16W J		R1624	NRSA63J-101X	MG R	100Ω	1/16W J
	R1155	NRSA63J-471X	MG R	470Ω	1/16W J		R1625	NRSA63J-101X	MG R	100Ω	1/16W J
	R1301	NRSA63J-222X	MG R	2.2kΩ	1/16W J		R1626	NRSA63J-102X	MG R	1kΩ	1/16W J
	R1302	NRSA63J-222X	MG R	2.2kΩ	1/16W J		R1627	NRSA63J-102X	MG R	1kΩ	1/16W J
	R1303	NRSA63J-562X	MG R	5.6kΩ	1/16W J		R1650	NRSA63J-103X	MG R	10kΩ	1/16W J
	R1304	NRSA63J-222X	MG R	2.2kΩ	1/16W J		R1651	NRSA63J-822X	MG R	8.2kΩ	1/16W J
	R1305	NRSA63J-222X	MG R	2.2kΩ	1/16W J		R1654	NRSA63J-103X	MG R	10kΩ	1/16W J
	R1306	NRSA63J-562X	MG R	5.6kΩ	1/16W J		R1655	NRSA63J-822X	MG R	8.2kΩ	1/16W J
	R1351	NRSA63J-151X	MG R	150Ω	1/16W J		R1658	QRE121J-2R2Y	C R	2.2Ω	1/2W J
	R1352	QRL029J-123	OM R	12kΩ	2W J		R1659	QRE121J-2R2Y	C R	2.2Ω	1/2W J
	R1353	NRSA63J-182X	MG R	1.8kΩ	1/16W J		R1660	NRSA63J-103X	MG R	10kΩ	1/16W J
	R1354	NRSA63J-331X	MG R	330Ω	1/16W J		R1661	NRSA63J-683X	MG R	68kΩ	1/16W J
	R1355	NRSA63J-101X	MG R	100Ω	1/16W J		R1662	NRSA63J-333X	MG R	33kΩ	1/16W J
	R1356	QRE121J-102Y	C R	1kΩ	1/2W J		R1663	NRSA63J-103X	MG R	10kΩ	1/16W J
	R1357	QRZ0107-152Z	C R	1.5kΩ	1W K		R1664	NRSA63J-222X	MG R	2.2kΩ	1/16W J
	R1358	QRE121J-272Y	C R	2.7kΩ	1/2W J		R1686	NRSA63J-102X	MG R	1kΩ	1/16W J
	R1359	QRE121J-561Y	C R	560Ω	1/2W J		R1687	NRSA63J-103X	MG R	10kΩ	1/16W J
	R1361	NRSA63J-151X	MG R	150Ω	1/16W J		R1688	NRSA63J-273X	MG R	27kΩ	1/16W J
	R1362	QRL029J-123	OM R	12kΩ	2W J		R1690	NRSA63J-104X	MG R	100kΩ	1/16W J
	R1363	NRSA63J-182X	MG R	1.8kΩ	1/16W J		R1698	NRSA63J-104X	MG R	100kΩ	1/16W J
	R1364	NRSA63J-331X	MG R	330Ω	1/16W J		R1699	NRSA63J-104X	MG R	100kΩ	1/16W J
	R1365	NRSA63J-101X	MG R	100Ω	1/16W J		R1701	NRSA63J-101X	MG R	100Ω	1/16W J
	R1366	QRE121J-102Y	C R	1kΩ	1/2W J		R1702	NRSA63J-101X	MG R	100Ω	1/16W J
	R1367	QRZ0107-152Z	C R	1.5kΩ	1W K		R1703	NRSA63J-101X	MG R	100Ω	1/16W J
	R1368	NRSA63J-332X	MG R	3.3kΩ	1/16W J		R1704	NRSA63J-102X	MG R	1kΩ	1/16W J
△	R1369	QRZ9017-4R7	F R	4.7Ω	1/4W J		R1705	NRSA63J-102X	MG R	1kΩ	1/16W J
	R1370	NRSA63J-151X	MG R	150Ω	1/16W J		R1706	NRSA63J-102X	MG R	1kΩ	1/16W J
	R1371	QRL029J-123	OM R	12kΩ	2W J		R1707	NRSA63J-472X	MG R	4.7kΩ	1/16W J
	R1372	NRSA63J-182X	MG R	1.8kΩ	1/16W J		R1708	NRSA63J-472X	MG R	4.7kΩ	1/16W J
	R1373	NRSA63J-331X	MG R	330Ω	1/16W J		R1709	NRSA63J-472X	MG R	4.7kΩ	1/16W J
	R1374	NRSA63J-101X	MG R	100Ω	1/16W J		R1710	NRSA63J-472X	MG R	4.7kΩ	1/16W J
	R1375	QRE121J-102Y	C R	1kΩ	1/2W J		R1711	NRSA63J-101X	MG R	100Ω	1/16W J
	R1376	QRZ0107-152Z	C R	1.5kΩ	1W K		R1712	NRSA63J-101X	MG R	100Ω	1/16W J

△ Symbol No.	Part No.	Part Name	Description	Local
RESISTOR				
R1713	NRSA63J-101X	MG R	100Ω 1/16W J	
R1714	NRSA63J-101X	MG R	100Ω 1/16W J	
R1715	NRSA63J-103X	MG R	10kΩ 1/16W J	
R1716	NRSA63J-103X	MG R	10kΩ 1/16W J	
R1717	NRSA63J-103X	MG R	10kΩ 1/16W J	
R1718	NRSA63J-221X	MG R	220Ω 1/16W J	
R1719	NRSA63J-221X	MG R	220Ω 1/16W J	
R1720	NRSA63J-102X	MG R	1kΩ 1/16W J	
R1721	NRSA63J-221X	MG R	220Ω 1/16W J	
R1722	NRSA63J-221X	MG R	220Ω 1/16W J	
R1723	NRSA63J-221X	MG R	220Ω 1/16W J	
R1724	NRSA63J-221X	MG R	220Ω 1/16W J	
R1725	NRSA63J-103X	MG R	10kΩ 1/16W J	
R1726	NRSA63J-472X	MG R	4.7kΩ 1/16W J	
R1727	NRSA63J-104X	MG R	100kΩ 1/16W J	
R1728	NRSA63J-103X	MG R	10kΩ 1/16W J	
R1729	NRSA63J-470X	MG R	47Ω 1/16W J	
R1730	NRSA63J-223X	MG R	22kΩ 1/16W J	
R1731	NRSA63J-101X	MG R	100Ω 1/16W J	
R1732	NRSA02F-393X	MG R	39kΩ 1/10W F	
R1733	NRSA63J-273X	MG R	27kΩ 1/16W J	
R1734	NRSA63J-391X	MG R	390Ω 1/16W J	
R1735	NRSA63J-104X	MG R	100kΩ 1/16W J	
R1736	NRSA63J-333X	MG R	33kΩ 1/16W J	
R1737	NRSA63J-272X	MG R	2.7kΩ 1/16W J	
R1738	NRSA63J-0R0X	MG R	0.0Ω 1/16W J	
R1739	NRSA63J-101X	MG R	100Ω 1/16W J	
R1740	NRSA63J-101X	MG R	100Ω 1/16W J	
R1741	NRSA63J-101X	MG R	100Ω 1/16W J	
R1742	NRSA63J-0R0X	MG R	0.0Ω 1/16W J	
R1743	NRSA63J-681X	MG R	680Ω 1/16W J	
R1744	NRSA63J-561X	MG R	560Ω 1/16W J	
R1745	NRSA63J-105X	MG R	1MΩ 1/16W J	
R1746	NRSA63J-333X	MG R	33kΩ 1/16W J	
R1747	NRSA63J-103X	MG R	10kΩ 1/16W J	
R1748	NRSA02J-475X	MG R	4.7MΩ 1/10W J	
R1749	NRSA02J-475X	MG R	4.7MΩ 1/10W J	
R1750	NRSA63J-0R0X	MG R	0.0Ω 1/16W J	
R1755	NRSA63J-101X	MG R	100Ω 1/16W J	
R1756	NRSA63J-101X	MG R	100Ω 1/16W J	
R1757	NRSA63J-222X	MG R	2.2kΩ 1/16W J	
R1758	NRSA63J-222X	MG R	2.2kΩ 1/16W J	
R1760	NRSA63J-682X	MG R	6.8kΩ 1/16W J	
R1770	QRE121J-271Y	C R	270Ω 1/2W J	
R1771	NRSA63J-102X	MG R	1kΩ 1/16W J	
R1772	QRE121J-271Y	C R	270Ω 1/2W J	
R1773	NRSA63J-102X	MG R	1kΩ 1/16W J	
R1775	NRSA63J-332X	MG R	3.3kΩ 1/16W J	
R1776	NRSA63J-392X	MG R	3.9kΩ 1/16W J	
R1777	NRSA63J-392X	MG R	3.9kΩ 1/16W J	
R1779	NRSA63J-272X	MG R	2.7kΩ 1/16W J	
R1780	NRSA63J-471X	MG R	470Ω 1/16W J	
R1781	NRSA63J-122X	MG R	1.2kΩ 1/16W J	
R1782	NRSA63J-181X	MG R	180Ω 1/16W J	
R1783	NRSA63J-221X	MG R	220Ω 1/16W J	
R1784	NRSA63J-331X	MG R	330Ω 1/16W J	
R1785	NRSA63J-471X	MG R	470Ω 1/16W J	
R1803	NRSA63J-333X	MG R	33kΩ 1/16W J	
R1804	NRSA63J-750X	MG R	75Ω 1/16W J	
R1805	NRSA63J-750X	MG R	75Ω 1/16W J	
R1806	NRSA63J-750X	MG R	75Ω 1/16W J	
R1807	NRSA63J-750X	MG R	75Ω 1/16W J	
R1808	NRSA63J-823X	MG R	82kΩ 1/16W J	
R1809	NRSA63J-391X	MG R	390Ω 1/16W J	
R1810	NRSA63J-823X	MG R	82kΩ 1/16W J	
R1811	NRSA63J-391X	MG R	390Ω 1/16W J	
R1812	NRSA63J-104X	MG R	100kΩ 1/16W J	
R1813	NRSA63J-222X	MG R	2.2kΩ 1/16W J	
R1815	NRSA63J-101X	MG R	100Ω 1/16W J	
R1818	NRSA63J-222X	MG R	2.2kΩ 1/16W J	
R1820	NRSA63J-101X	MG R	100Ω 1/16W J	
R1821	NRSA63J-222X	MG R	2.2kΩ 1/16W J	

△ Symbol No.	Part No.	Part Name	Description	Local
RESISTOR				
R1823	NRSA63J-101X	MG R	100Ω 1/16W J	
R1824	NRSA63J-222X	MG R	2.2kΩ 1/16W J	
R1826	NRSA63J-101X	MG R	100Ω 1/16W J	
R1829	NRSA63J-750X	MG R	75Ω 1/16W J	
R1830	NRSA63J-222X	MG R	2.2kΩ 1/16W J	
R1831	NRSA63J-222X	MG R	2.2kΩ 1/16W J	
R1832	NRSA63J-122X	MG R	1.2kΩ 1/16W J	
R1833	NRSA63J-102X	MG R	1kΩ 1/16W J	
R1834	NRSA63J-562X	MG R	5.6kΩ 1/16W J	
R1835	NRSA63J-562X	MG R	5.6kΩ 1/16W J	
R1836	NRSA63J-750X	MG R	75Ω 1/16W J	
R1837	NRSA63J-101X	MG R	100Ω 1/16W J	
R1838	QRK126J-121X	UNF R	120Ω 1/2W J	
R1839	QRE121J-221Y	C R	220Ω 1/2W J	
R1840	QRE121J-221Y	C R	220Ω 1/2W J	
R1841	NRSA63J-0R0X	MG R	0.0Ω 1/16W J	
R1842	NRSA63J-0R0X	MG R	0.0Ω 1/16W J	
R1843	NRSA63J-821X	MG R	820Ω 1/16W J	
R1844	NRSA63J-222X	MG R	2.2kΩ 1/16W J	
R1845	NRSA63J-102X	MG R	1kΩ 1/16W J	
R1846	NRSA63J-222X	MG R	2.2kΩ 1/16W J	
R1847	NRSA63J-103X	MG R	10kΩ 1/16W J	
R1848	NRSA63J-471X	MG R	470Ω 1/16W J	
R1849	NRSA63J-221X	MG R	220Ω 1/16W J	
R1880	NRSA63J-202X	MG R	2kΩ 1/16W J	
R1881	NRSA63J-103X	MG R	10kΩ 1/16W J	
R1882	NRSA63J-471X	MG R	470Ω 1/16W J	
R1883	NRSA63J-181X	MG R	180Ω 1/16W J	
R1902	QRF154K-2R2	UNF R	2.2Ω 15W K	
R1904	QRE121J-681Y	C R	680Ω 1/2W J	
R1905	QRM034J-R15	MP R	0.15Ω 3W J	
R1907	NRSA63J-563X	MG R	56kΩ 1/16W J	
R1908	QRL039J-333	OM R	33kΩ 3W J	
R1909	QRE121J-474Y	C R	470kΩ 1/2W J	
R1910	QRE121J-472Y	C R	4.7kΩ 1/2W J	
R1911	QRE121J-332Y	C R	3.3kΩ 1/2W J	
R1912	NRSA63J-152X	MG R	1.5kΩ 1/16W J	
△ R1915	QRZ0111-474	C R	470kΩ 1W K	
R1952	NRSA63J-332X	MG R	3.3kΩ 1/16W J	
R1953	NRSA63J-101X	MG R	100Ω 1/16W J	
R1957	QRE121J-6R8Y	C R	6.8Ω 1/2W J	
R1960	NRSA63J-391X	MG R	390Ω 1/16W J	
R1961	QRL029J-223	OM R	22kΩ 2W J	
R1962	NRSA63J-561X	MG R	560Ω 1/16W J	
R1963	QRE121J-103Y	C R	10kΩ 1/2W J	
R1964	NRSA63J-473X	MG R	47kΩ 1/16W J	
R1965	NRSA63J-0R0X	MG R	0.0Ω 1/16W J	
R1966	NRSA63J-682X	MG R	6.8kΩ 1/16W J	
R1967	NRSA63J-473X	MG R	47kΩ 1/16W J	
R1970	NRSA63J-153X	MG R	15kΩ 1/16W J	
R1971	NRSA63J-183X	MG R	18kΩ 1/16W J	
R1972	NRSA63J-391X	MG R	390Ω 1/16W J	
△ R1991	QRZ9046-825Z	C R	8.2MΩ 1W J	
CAPACITOR				
C1001	NCB31HK-103X	C CAP.	0.01μF 50V K	
C1002	QETN1HM-106Z	E CAP.	10μF 50V M	
C1003	QFV71HJ-104Z	MF CAP.	0.1μF 50V J	
C1004	QETN1CM-477Z	E CAP.	470μF 16V M	
C1005	NCB31HK-222X	C CAP.	2200pF 50V K	
C1006	QETN1CM-336Z	E CAP.	33μF 16V M	
C1007	NCB31HK-103X	C CAP.	0.01μF 50V K	
C1101	NCB31HK-472X	C CAP.	4700pF 50V K	
C1102	NCB31HK-472X	C CAP.	4700pF 50V K	
C1103	NCB31HK-472X	C CAP.	4700pF 50V K	
C1104	NCB31HK-472X	C CAP.	4700pF 50V K	
C1105	NCB31HK-472X	C CAP.	4700pF 50V K	
C1106	NDC21HJ-180X	C CAP.	18pF 50V J	
C1107	NCB31HK-103X	C CAP.	0.01μF 50V K	
C1109	QETN1HM-106Z	E CAP.	10μF 50V M	
C1130	NCB31HK-103X	C CAP.	0.01μF 50V K	

△ Symbol No.	Part No.	Part Name	Description	Local
CAPACITOR				
C1131	NCB31HK-103X	C CAP.	0.01μF 50V K	
C1132	NCB31HK-103X	C CAP.	0.01μF 50V K	
C1133	QETN1CM-107Z	E CAP.	100μF 16V M	
C1134	NCB31HK-103X	C CAP.	0.01μF 50V K	
C1135	QETN1AM-477Z	E CAP.	470μF 10V M	
C1136	NCB31HK-103X	C CAP.	0.01μF 50V K	
C1137	NCB31HK-103X	C CAP.	0.01μF 50V K	
C1138	NCB31HK-103X	C CAP.	0.01μF 50V K	
C1139	NCB31HK-103X	C CAP.	0.01μF 50V K	
C1140	NCB31HK-103X	C CAP.	0.01μF 50V K	
C1141	NCB31HK-103X	C CAP.	0.01μF 50V K	
C1142	NCB31HK-103X	C CAP.	0.01μF 50V K	
C1143	QETN1HM-106Z	E CAP.	10μF 50V M	
C1144	NCB31HK-223X	C CAP.	0.022μF 50V K	
C1308	NCB31HK-103X	C CAP.	0.01μF 50V K	
C1310	NRSA63J-0R0X	MG R	0.0Ω 1/16W J	
C1350	NDC21HJ-471X	C CAP.	470pF 50V J	
C1351	NDC31HJ-681X	C CAP.	680pF 50V J	
C1352	QETN2EM-475Z	E CAP.	4.7μF 250V M	
C1353	QETN1HM-107Z	E CAP.	100μF 50V M	
C1354	QETN1HM-105Z	E CAP.	1μF 50V M	
C1360	NDC21HJ-471X	C CAP.	470pF 50V J	
C1361	NDC31HJ-681X	C CAP.	680pF 50V J	
C1370	NDC21HJ-471X	C CAP.	470pF 50V J	
C1371	NDC31HJ-821X	C CAP.	820pF 50V J	
C1372	NRSA63J-273X	MG R	27kΩ 1/16W J	
C1374	QCZ0364-222	C CAP.	2200pF 50V K	
C1375	QETN1CM-477Z	E CAP.	470μF 16V M	
C1401	QETN1HM-105Z	E CAP.	1μF 50V M	
C1402	QCB31HK-682Z	C CAP.	6800pF 50V K	
C1403	QEHR1VM-227Z	E CAP.	220μF 35V M	
C1406	QFLC2AJ-683Z	M CAP.	0.068μF 100V J	
C1407	QCS32HJ-180Z	C CAP.	18pF 500V J	
C1408	QFV71HJ-184Z	MF CAP.	0.18μF 50V J	
C1411	NCF21HZ-334X	C CAP.	0.33μF 50V Z	
C1412	NCF21HZ-334X	C CAP.	0.33μF 50V Z	
C1413	QFLC2AJ-563Z	M CAP.	0.056μF 100V J	
C1422	QEHQ1VM-108	E CAP.	1000μF 35V M	
C1521	QETN1VM-476Z	E CAP.	47μF 35V M	
C1522	QFLC1HJ-332Z	M CAP.	3300pF 50V J	
C1523	QFLC1HJ-223Z	M CAP.	0.022μF 50V J	
C1524	QFZ0200-632	MPP CAP.	6300pF 1.5kVH±3%	
C1525	QFZ0196-382	MPP CAP.	3800pF 1.5kVH±3%	
C1526	QFP32GJ-393	PP CAP.	0.039μF 400V J	
C1527	QFZ0199-124	MPP CAP.	0.12μF AC250V J	
C1528	QFZ0199-124	MPP CAP.	0.12μF AC250V J	
C1529	QEHR1EM-475Z	E CAP.	4.7μF 250V M	
C1530	QCB32HK-561Z	C CAP.	560pF 500V K	
C1531	QEHR1EM-108Z	E CAP.	1000μF 25V M	
C1533	QEHR1EM-108Z	E CAP.	1000μF 25V M	
C1535	QCB32HK-101Z	C CAP.	100pF 500V K	
C1536	QFLC1HJ-103Z	M CAP.	0.01μF 50V J	
C1540	QFV71HJ-104Z	MF CAP.	0.1μF 50V J	
C1541	QETN2EM-226Z	E CAP.	22μF 250V M	
C1542	QETN2EM-226Z	E CAP.	22μF 250V M	
C1550	NCB31CK-104X	C CAP.	0.1μF 16V K	
C1591	QETN1AM-107Z	E CAP.	100μF 10V M	
C1592	QEZ0203-107	E CAP.	100μF 160V M	
C1593	QETN1EM-476Z	E CAP.	47μF 25V M	
C1625	QETN1HM-475Z	E CAP.	4.7μF 50V M	
C1626	QETN1HM-475Z	E CAP.	4.7μF 50V M	
C1628	NCB31HK-472X	C CAP.	4700pF 50V K	
C1629	NCB31EK-104X	C CAP.	0.1μF 25V K	
C1630	QETN1HM-475Z	E CAP.	4.7μF 50V M	
C1631	NCB31EK-104X	C CAP.	0.1μF 25V K	
C1632	QETN1HM-475Z	E CAP.	4.7μF 50V M	
C1633	QETN1HM-475Z	E CAP.	4.7μF 50V M	
C1634	QETN1HM-475Z	E CAP.	4.7μF 50V M	
C1635	QETN1HM-107Z	E CAP.	100μF 50V M	
C1636	QETN1HM-475Z	E CAP.	4.7μF 50V M	
C1637	QETN1HM-475Z	E CAP.	4.7μF 50V M	
C1638	NCB31EK-104X	C CAP.	0.1μF 25V K	

△ Symbol No.	Part No.	Part Name	Description	Local
CAPACITOR				
C1639	NCF21CZ-105X	C CAP.	1μF 16V Z	
C1640	QETN1HM-475Z	E CAP.	4.7μF 50V M	
C1641	NCB31EK-104X	C CAP.	0.1μF 25V K	
C1642	NCB31HK-472X	C CAP.	4700pF 50V K	
C1644	QETN1HM-475Z	E CAP.	4.7μF 50V M	
C1645	QETN1HM-475Z	E CAP.	4.7μF 50V M	
C1650	QEHR1HM-106Z	E CAP.	10μF 50V M	
C1651	QEHR1VM-476Z	E CAP.	47μF 35V M	
C1652	QETN1HM-106Z	E CAP.	10μF 50V M	
C1655	QEHQ1VM-108	E CAP.	1000μF 35V M	
C1656	QEHQ1VM-108	E CAP.	1000μF 35V M	
C1659	NCF21HZ-224X	C CAP.	0.22μF 50V Z	
C1660	NCF21HZ-224X	C CAP.	0.22μF 50V Z	
C1661	NCF21HZ-224X	C CAP.	0.22μF 50V Z	
C1662	QEHR1VM-227Z	E CAP.	220μF 35V M	
C1663	NCF21HZ-224X	C CAP.	0.22μF 50V Z	
C1681	QETN1CM-227Z	E CAP.	220μF 16V M	
C1682	QETN1CM-227Z	E CAP.	220μF 16V M	
C1683	QETN1CM-336Z	E CAP.	33μF 16V M	
C1684	QETN1HM-106Z	E CAP.	10μF 50V M	
C1685	NRSA63J-0R0X	MG R	0.0Ω 1/16W J	
C1686	NRSA63J-0R0X	MG R	0.0Ω 1/16W J	
C1701	QETN1CM-227Z	E CAP.	220μF 16V M	
C1702	QETN1HM-106Z	E CAP.	10μF 50V M	
C1703	NDC31HJ-330X	C CAP.	33pF 50V J	
C1704	NDC31HJ-330X	C CAP.	33pF 50V J	
C1705	NCB31HK-102X	C CAP.	1000pF 50V K	
C1706	NCB21EK-224X	C CAP.	0.22μF 25V K	
C1707	QETN1CM-107Z	E CAP.	100μF 16V M	
C1709	QETN1CM-107Z	E CAP.	100μF 16V M	
C1710	NCB21EK-224X	C CAP.	0.22μF 25V K	
C1711	NCB31CK-104X	C CAP.	0.1μF 16V K	
C1713	NCB31CK-104X	C CAP.	0.1μF 16V K	
C1714	QETN1CM-476Z	E CAP.	47μF 16V M	
C1720	QETN1CM-476Z	E CAP.	47μF 16V M	
C1725	NCB31HK-681X	C CAP.	680pF 50V K	
C1730	NCB21EK-224X	C CAP.	0.22μF 25V K	
C1731	NCB21EK-224X	C CAP.	0.22μF 25V K	
C1732	QETN1CM-107Z	E CAP.	100μF 16V M	
C1733	NCB31CK-104X	C CAP.	0.1μF 16V K	
C1734	NCB31HK-222X	C CAP.	2200pF 50V K	
C1735	NCB31HK-222X	C CAP.	2200pF 50V K	
C1736	QETN1HM-105Z	E CAP.	1μF 50V M	
C1737	QETN1HM-105Z	E CAP.	1μF 50V M	
C1738	NCB31CK-104X	C CAP.	0.1μF 16V K	
C1739	NFV41CJ-104X	MPP CAP.	0.1μF 16V J	
C1740	QETN1HM-225Z	E CAP.	2.2μF 50V M	
C1741	NCB31CK-104X	C CAP.	0.1μF 16V K	
C1742	NCB31CK-104X	C CAP.	0.1μF 16V K	
C1743	QETN1CM-107Z	E CAP.	100μF 16V M	
C1744	NCB31HK-102X	C CAP.	1000pF 50V K	
C1745	NCB31EK-473X	C CAP.	0.047μF 25V K	
C1746	NCB31EK-473X	C CAP.	0.047μF 25V K	
C1747	NCB31EK-473X	C CAP.	0.047μF 25V K	
C1748	QETN1CM-476Z	E CAP.	47μF 16V M	
C1749	QETN1HM-106Z	E CAP.	10μF 50V M	
C1751	NCB31CK-104X	C CAP.	0.1μF 16V K	
C1752	NCB31CK-104X	C CAP.	0.1μF 16V K	
C1753	NCB31CK-104X	C CAP.	0.1μF 16V K	
C1760	NCB31HK-104X	C CAP.	0.1μF 50V K	
C1761	QETN1CM-107Z	E CAP.	100μF 16V M	
C1770	QETN1HM-106Z	E CAP.	10μF 50V M	
C1801	QETN1HM-106Z	E CAP.	10μF 50V M	
C1802	QETN1HM-106Z	E CAP.	10μF 50V M	
C1803	QETN1HM-106Z	E CAP.	10μF 50V M	
C1804	QETN1HM-106Z	E CAP.	10μF 50V M	
C1805	NCB31HK-104X	C CAP.	0.1μF 50V K	
C1807	NCF31AZ-105X	C CAP.	1μF 10V Z	
C1808	NCF31AZ-105X	C CAP.	1μF 10V Z	
C1810	NCF31AZ-105X	C CAP.	1μF 10V Z	
C1811	NCB31HK-104X	C CAP.	0.1μF 50V K	
C1812	NCF31AZ-105X	C CAP.	1μF 10V Z	

△	Symbol No.	Part No.	Part Name	Description	Local
CAPACITOR					
	C1813	NCB31HK-103X	C CAP.	0.01μF 50V	K
	C1814	NCB31HK-104X	C CAP.	0.1μF 50V	K
	C1815	NCF31AZ-105X	C CAP.	1μF 10V	Z
	C1817	NCF31AZ-105X	C CAP.	1μF 10V	Z
	C1819	NCB31HK-104X	C CAP.	0.1μF 50V	K
	C1820	NCF31AZ-105X	C CAP.	1μF 10V	Z
	C1821	NCF31AZ-105X	C CAP.	1μF 10V	Z
	C1822	QETN1CM-477Z	E CAP.	470μF 16V	M
	C1823	QETN1CM-107Z	E CAP.	100μF 16V	M
	C1824	QETN1CM-107Z	E CAP.	100μF 16V	M
	C1825	NCB31HK-103X	C CAP.	0.01μF 50V	K
	C1826	NCB31HK-104X	C CAP.	0.1μF 50V	K
	C1827	NCB31HK-103X	C CAP.	0.01μF 50V	K
	C1829	NCB31HK-103X	C CAP.	0.01μF 50V	K
	C1830	NCB31HK-103X	C CAP.	0.01μF 50V	K
	C1831	NCB31HK-103X	C CAP.	0.01μF 50V	K
	C1833	QETN1HM-226Z	E CAP.	22μF 50V	M
	C1834	NDC31HJ-181X	C CAP.	180pF 50V	J
△	C1901	QFZ9075-104	MPP CAP.	0.1μF	
△	C1902	QFZ9075-473	MPP CAP.	0.047μF	
	C1903	QCZ9015-102Z	C CAP.	1000pF AC250V	Z
	C1904	QCZ9015-102Z	C CAP.	1000pF AC250V	Z
	C1905	QCZ9015-102Z	C CAP.	1000pF AC250V	Z
△	C1906	QFZ9072-224	MM CAP.	0.22μF	
	C1907	QEZ0552-227	E CAP.	220μF	
	C1908	QFZ0209-222	MPP CAP.	2200pF	
	C1910	NDC31HJ-471X	C CAP.	470pF 50V	J
	C1911	QEHR1EM-227Z	E CAP.	220μF 25V	M
	C1914	QETN1EM-227Z	E CAP.	220μF 25V	M
	C1915	QFLC1HJ-152Z	M CAP.	1500pF 50V	J
	C1916	NCB31HK-104X	C CAP.	0.1μF 50V	K
	C1952	QCB32HK-471Z	C CAP.	470pF 500V	K
	C1953	QEHQ1VM-108	E CAP.	1000μF 35V	M
	C1954	NCB31HK-102X	C CAP.	1000pF 50V	K
	C1957	QCB32HK-471Z	C CAP.	470pF 500V	K
	C1958	QEHQ1EM-228	E CAP.	2200μF 25V	M
	C1959	QCZ0364-561	C CAP.	560pF	
	C1959	QCZ0325-561	C CAP.	560pF 2000V	K
	C1959	QCZ0122-561	C CAP.	560pF 2000V	K
	C1960	QEZ0203-107	E CAP.	100μF 160V	M
	C1961	QETN1HM-225Z	E CAP.	2.2μF 50V	M
	C1962	QETN1HM-106Z	E CAP.	10μF 50V	M
	C1964	QETN1CM-476Z	E CAP.	47μF 16V	M
	C1965	QETN1HM-225Z	E CAP.	2.2μF 50V	M
	C1968	NCB31CK-104X	C CAP.	0.1μF 16V	K
	C1972	QEHR1VM-476Z	E CAP.	47μF 35V	M
	C1973	QEHR1CM-107Z	E CAP.	100μF 16V	M
	C1974	NCB31CK-104X	C CAP.	0.1μF 16V	K
	C1975	QEHR1CM-227Z	E CAP.	220μF 16V	M
	C1976	QEHR1CM-107Z	E CAP.	100μF 16V	M
	C1977	QEHR1AM-477Z	E CAP.	470μF 10V	M
	C1978	NCB31HK-104X	C CAP.	0.1μF 50V	K
	C1980	QETN1CM-107Z	E CAP.	100μF 16V	M
△	C1991	QCZ9079-102	C CAP.	1000pF AV250V	M
△	C1992	QCZ9079-102	C CAP.	1000pF AV250V	M
△	C1993	QCZ9079-102	C CAP.	1000pF AV250V	M

TRANSFORMER

	T1521	CE40203-00CJ1	DRIVE TRANSF
△	T1551	QQH0137-001	FB TRANSF
△	T1901	QQS0165-001	SW TRANSF

COIL

L1001	CE42050-001Z	BEADS CORE	
L1002	CE42050-001Z	BEADS CORE	
L1101	QQL2014-R82	COIL	0.82μH
L1104	QQL244K-180Z	COIL	18μH K
L1523	QQR1005-004	LINEARITY COIL	
L1524	QQL2034-320	COIL	32μH
L1701	QQL244K-100Z	COIL	10μH K
L1702	QQL244K-100Z	COIL	10μH K


△	Symbol No.	Part No.	Part Name	Description	Local
COIL					
	L1731	QQL244J-5R6Z	COIL	5.6μH	J
	L1732	QQL244J-5R6Z	COIL	5.6μH	J
	L1951	QQL2034-460	COIL	46μH	
	L1953	QQL244J-5R6Z	COIL	5.6μH	J
	L1954	QQL244J-5R6Z	COIL	5.6μH	J
DIODE					
	D1101	DAN235K-X	SI. DIODE		
	D1350	1SS244-T2	SI. DIODE		
	D1352	RGP10J-5025-T3	SI. DIODE		
	D1353	MA111-X	SI. DIODE		
	D1354	MA111-X	SI. DIODE		
	D1355	MA111-X	SI. DIODE		
	D1356	MA111-X	SI. DIODE		
	D1357	MA111-X	SI. DIODE		
	D1358	MA111-X	SI. DIODE		
	D1360	1SS244-T2	SI. DIODE		
	D1370	1SS244-T2	SI. DIODE		
	D1372	MA3075/M/-X	ZENER DIODE		
	D1373	MA111-X	SI. DIODE		
	D1374	MA111-X	SI. DIODE		
	D1401	RGP10J-5025-T3	SI. DIODE		
	D1402	MTZJ75-T2	ZENER DIODE		
	D1405	1N4003-T2	SI. DIODE		
	D1408	MA111-X	SI. DIODE		
	D1521	ERB06-15-F1	SI. DIODE		
	D1522	RU3AM-LFC4	SI. DIODE		
	D1523	RGP10J-5025-T3	SI. DIODE		
	D1541	RGP10J-5025-T3	SI. DIODE		
	D1550	MA111-X	SI. DIODE		
	D1551	RGP10J-5025-T3	SI. DIODE		
	D1553	RGP10J-5025-T3	SI. DIODE		
	D1554	RGP10J-5025-T3	SI. DIODE		
	D1592	MA3075/H/-X	ZENER DIODE		
	D1652	MA3330/L/-X	ZENER DIODE		
	D1653	MA3330/L/-X	ZENER DIODE		
	D1655	MA111-X	SI. DIODE		
	D1682	MA111-X	SI. DIODE		
	D1702	MA3024-X	ZENER DIODE		
	D1703	MA3051/M/-X	ZENER DIODE		
	D1704	MA3033-X	ZENER DIODE		
	D1730	MA111-X	SI. DIODE		
	D1731	MA111-X	SI. DIODE		
	D1732	MA111-X	SI. DIODE		
	D1733	MA111-X	SI. DIODE		
	D1760	SLR-342VR-T16	LED		
	D1770	MA111-X	SI. DIODE		
	D1771	P1241-04	PHOTO CONDUCTOR		
	D1801	MA3120/M/-X	ZENER DIODE		
	D1802	MA3120/M/-X	ZENER DIODE		
	D1807	MA3100/M/-X	ZENER DIODE		
	D1808	MA3100/M/-X	ZENER DIODE		
	D1901	GSIB460	BRIDGE DIODE		
	D1903	MTZJ12C-T2	ZENER DIODE		
	D1904	EG01C-T2	SI. DIODE		
	D1906	EG01C-T2	SI. DIODE		
	D1907	MA3150/M/-X	ZENER DIODE		
	D1908	MTZJ27B-T2	ZENER DIODE		
	D1909	MA111-X	SI. DIODE		
	D1910	MA111-X	SI. DIODE		
	D1911	RGP10J-TS-T3	SI. DIODE		
	D1912	1SS133-T2	SI. DIODE		
	D1914	ERC30-02L38	SI. DIODE		
	D1952	ERC30-02L38	SI. DIODE		
	D1954	RGP30B-F1	SI. DIODE		
	D1956	RU3AM-LFC4	SI. DIODE		
	D1964	MA3330/L/-X	ZENER DIODE		
	D1965	1SS133-T2	SI. DIODE		
	D1966	MA3068/M/-X	ZENER DIODE		
	D1968	MA111-X	SI. DIODE		
	D1969	MA111-X	SI. DIODE		
	D1971	MA111-X	SI. DIODE		

△ Symbol No.	Part No.	Part Name	Description	Local	△ Symbol No.	Part No.	Part Name	Description	Local
TRANSISTOR					OTHERS				
Q1101	2SC5083/L-P/-T	TRANSISTOR				LC30114-001C-H	LED HOLDER		
Q1102	UN2212-X	DIGI TRANSISTOR				CM35921-B02	CDS HOLDER		
Q1104	2SB709A/QR/-X	TRANSISTOR			CF1106	QAX0639-001Z	C TRAP		
Q1105	UN2212-X	DIGI TRANSISTOR			CF1130	QAX0642-001Z	C FILTER		
Q1106	UN2212-X	DIGI TRANSISTOR			CF1140	QAX0695-001Z	C FILTER		
Q1108	2SD601A/QR/-X	TRANSISTOR			CF1141	QAX0696-001Z	C FILTER		
Q1109	2SB709A/QR/-X	TRANSISTOR			CF1142	QAX0697-001Z	C FILTER		
Q1110	UN2212-X	DIGI TRANSISTOR			CL1001	QZW0027-002	WIRE CLAMP		
Q1111	2SD601A/QR/-X	TRANSISTOR			CL1002	QZW0027-001	WIRE CLAMP		
Q1130	2SB709A/QR/-X	TRANSISTOR			CL1003	QZW0027-004	WIRE CLAMP		
Q1131	UN2212-X	DIGI TRANSISTOR			△ CP1951	ICP-N75-Y	IC PROTECTOR		
Q1132	2SD601A/QR/-X	TRANSISTOR			△ CP1953	ICP-N75-Y	IC PROTECTOR		
Q1133	2SB709A/QR/-X	TRANSISTOR			△ F1901	QMF51E2-4R0J4	FUSE		
Q1134	UN2212-X	DIGI TRANSISTOR			FC1901	CEMG002-001Z	FUSE CLIP		
Q1135	UN2212-X	DIGI TRANSISTOR			J1770	QNS0155-001	3.5 JACK		
Q1136	2SD601A/QR/-X	TRANSISTOR			J1771	QNN0282-003	PIN JACK		
Q1137	2SD601A/QR/-X	TRANSISTOR			J1772	QNN0282-002	PIN JACK		
Q1138	UN2212-X	DIGI TRANSISTOR			J1773	QNN0282-001	PIN JACK		
Q1301	2SB709A/QR/-X	TRANSISTOR			J1801	QNN0349-001	PIN JACK		
Q1302	2SB709A/QR/-X	TRANSISTOR			J1802	QNN0349-002	PIN JACK		
Q1350	STC344-T	TRANSISTOR			J1803	QNN0348-001	PIN JACK		
Q1351	2SA1321-T	TRANSISTOR			J1804	QNN0349-001	PIN JACK		
Q1352	2SB709A/QR/-X	TRANSISTOR			K1104	QQR1113-001Z	FERRITE BEADS		
Q1360	STC344-T	TRANSISTOR			K1106	QQR1113-001Z	FERRITE BEADS		
Q1361	2SA1321-T	TRANSISTOR			K1701	QQR1113-001Z	FERRITE BEADS		
Q1370	STC344-T	TRANSISTOR			K1902	QQR1114-001Z	FERRITE BEADS		
Q1371	2SA1321-T	TRANSISTOR			K1903	QQR1114-001Z	FERRITE BEADS		
Q1374	2SD601A/QR/-X	TRANSISTOR			K1951	QQR1113-001Z	FERRITE BEADS		
Q1375	2SD601A/QR/-X	TRANSISTOR			K1954	QQR1113-001Z	FERRITE BEADS		
Q1376	2SD601A/QR/-X	TRANSISTOR			K1955	QQR1214-001Y	FERRITE BEADS		
Q1521	2SC2655/Y/-T	TRANSISTOR			△ LF1901	QQR0673-004	LINE FILTER		
Q1522	2SD2634-YD	POW TRANSISTOR			△ LF1902	QQR1035-002	LINE FILTER		
Q1591	2SA1208/ST/Z1-T	TRANSISTOR			△ PC1901	PC123F2	IC(PHOTO COUPLE)		
Q1592	UN2212-X	DIGI TRANSISTOR			△ RY1901	QSK0092-001	RELAY		
Q1660	2SD601A/QR/-X	TRANSISTOR			S1780	QSW0619-003Z	TACT SWITCH	MENU	
Q1661	2SD601A/QR/-X	TRANSISTOR			S1781	QSW0619-003Z	TACT SWITCH	CH-	
Q1683	2SB709A/QR/-X	TRANSISTOR			S1782	QSW0619-003Z	TACT SWITCH	CH+	
Q1684	2SB709A/QR/-X	TRANSISTOR			S1783	QSW0619-003Z	TACT SWITCH	VOL-	
Q1685	DTC323TK-X	DIGI TRANSISTOR			S1784	QSW0619-003Z	TACT SWITCH	VOL+	
Q1686	DTC323TK-X	DIGI TRANSISTOR			△ S1901	QSW0846-001	PUSH SWITCH	POWER	
Q1701	2SB709A/QR/-X	TRANSISTOR			SF1101	QAX0325-001	SAW FILTER		
Q1702	2SB709A/QR/-X	TRANSISTOR			SF1102	QAX0731-001	SAW FILTER		
Q1703	FMC2A-X	D.TRANSISTOR			△ SK1351	QNZ0537-001	CRT SOCKET		
Q1720	2SB709A/QR/-X	TRANSISTOR			TH1901	QAD0134-4R5	P THERMISTOR		
Q1770	2SB709A/QR/-X	TRANSISTOR			TU1001	QAU0185-005	TUNER		
Q1801	DTC323TK-X	DIGI TRANSISTOR			△ VA1901	QAF0052-621	VARISTOR		
Q1802	DTC323TK-X	DIGI TRANSISTOR			W1008	NRSA63J-0R0X	MG R	0.0Ω 1/16W	J
Q1803	2SB709A/QR/-X	TRANSISTOR			W1010	NRSA63J-0R0X	MG R	0.0Ω 1/16W	J
Q1804	2SC1740S/QR/-T	TRANSISTOR			W1052	NRSA63J-0R0X	MG R	0.0Ω 1/16W	J
Q1860	2SD601A/QR/-X	TRANSISTOR			W1071	NRSA63J-0R0X	MG R	0.0Ω 1/16W	J
Q1861	2SB709A/QR/-X	TRANSISTOR			W1096	NRSA63J-0R0X	MG R	0.0Ω 1/16W	J
Q1862	2SB709A/QR/-X	TRANSISTOR			W1239	NRSA63J-0R0X	MG R	0.0Ω 1/16W	J
Q1952	2SD601A/QR/-X	TRANSISTOR			W1257	NRSA63J-0R0X	MG R	0.0Ω 1/16W	J
Q1953	2SD601A/QR/-X	TRANSISTOR			W1307	NRSA63J-0R0X	MG R	0.0Ω 1/16W	J
Q1954	2SD601A/QR/-X	TRANSISTOR			W1309	NRSA63J-0R0X	MG R	0.0Ω 1/16W	J
					W1317	NRSA63J-0R0X	MG R	0.0Ω 1/16W	J
					W1322	NRSA63J-0R0X	MG R	0.0Ω 1/16W	J
					W1325	NRSA63J-0R0X	MG R	0.0Ω 1/16W	J
					W1326	NRSA63J-0R0X	MG R	0.0Ω 1/16W	J
					W1330	NRSA63J-0R0X	MG R	0.0Ω 1/16W	J
					W1333	NRSA63J-0R0X	MG R	0.0Ω 1/16W	J
					W1375	NRSA63J-0R0X	MG R	0.0Ω 1/16W	J
					W1379	NRSA63J-0R0X	MG R	0.0Ω 1/16W	J
					W1388	NRSA63J-0R0X	MG R	0.0Ω 1/16W	J
					W1417	NRSA63J-0R0X	MG R	0.0Ω 1/16W	J
					W1418	NRSA63J-0R0X	MG R	0.0Ω 1/16W	J
					W1430	NRSA63J-0R0X	MG R	0.0Ω 1/16W	J
					X1701	QAX0737-001	CRYSTAL		
					Y1001	NRSA63J-0R0X	MG R	0.0Ω 1/16W	J
					Y1002	NRSA63J-0R0X	MG R	0.0Ω 1/16W	J
					Y1005	NRSA63J-0R0X	MG R	0.0Ω 1/16W	J
					Y1130	NRSA63J-0R0X	MG R	0.0Ω 1/16W	J
					Y1301	NRSA63J-0R0X	MG R	0.0Ω 1/16W	J
					Y1601	NRSA63J-0R0X	MG R	0.0Ω 1/16W	J
					Y1604	NRSA63J-0R0X	MG R	0.0Ω 1/16W	J
IC									
IC1130	M52342SP	I.C(MONO-ANA)							
IC1401	AN5522	I.C(MONO-ANA)							
IC1602	NJW1138M-X	I.C(MONO-ANA)							
IC1650	AN5277	I.C(MONO-ANA)							
IC1701	TDA9386N22S0868	I.C(MICRO-COMP)							
IC1702	AT24C08-21WS3	I.C(MEMORY-OTH)	(SERVICE)						
IC1760	GP1UM281QK	IR DETECT UNIT							
IC1801	MM1492AF	I.C(MONO-ANA)							
IC1901	STR-F6709A/F7	I.C(HYBRID)							
IC1951	SE135N	I.C(HYBRID)							
IC1972	R1141Q331B-X	REGULATE							
IC1974	AN80T36	REG IC							

DIFFERENCE PARTS LIST BETWEEN AV-21WX3/A AND AV-2178TEE


In the DIFFERENCE PARTS LIST BETWEEN AV-21WX3/A and AV-2178TEE, only difference points between these models are written. For other parts not mentioned in the list, please refer to the PARTS LIST(P50 – P54) for the AV-21LWX3/A.

DIFFERENCE PARTS LIST

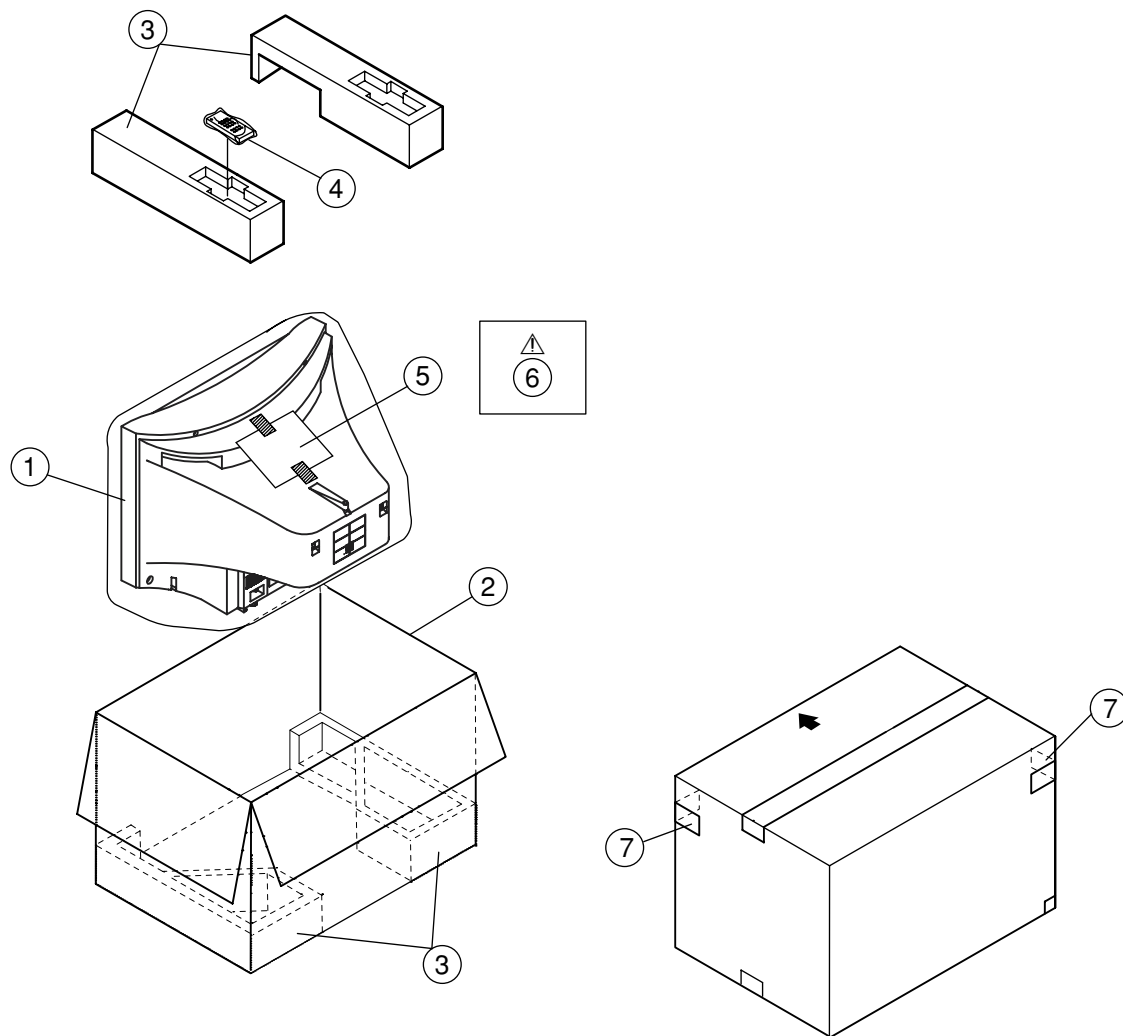
	Symbol No.	Part No.		Part Name
		AV-21WX3/A	AV-2178TEE	
		SCH-1077A-H2	SCH-1110A-H2	MAIN PWB
	IC701	TDA9386N22S0868	TDA9365N23S0874	IC

REMOTE CONTROL UNIT PARTS LIST

RM-C1011-1H [AV-21WH3]
RM-C1010-1H [AV-21WS3/AU]
RM-C1014-1H [AV-21WX3/A]
RM-C1013-1H [AV-2178TEE]

 Ref. No.	Part No.	Part Name	Description	Local
	25-1168F	BATTERY COVER		

PACKING



PACKING PARTS LIST

△ Ref.No.	Part No.	Part Name	Description	Local
1	CP30967-003-H	POLY BAG		
2	GG10044-042C-H	P CASE		
3	GG10188-001B-H	CUSHION ASSY		
4	RM-C1011-1H	RC HAND UNIT	[AV-21WH3]	
4	RM-C1010-1H	RC HAND UNIT	[AV-21WS3 _{AU}]	
4	RM-C1014-1H	RC HAND UNIT	[AV-21WX3 _A]	
4	RM-C1013-1H	RC HAND UNIT	[AV-2178TEE]	
5	CP30966-001-H	POLY BAG		
△ 6	LCT1177-001A-H	INST BOOK	[AV-21WH3]	
△ 6	LCT1170-001A-H	INST BOOK	[AV-21WS3 _{AU} , AV-21WX3 _A]	
△ 6	LCT1178-001A-H	INST BOOK	[AV-2178TEE]	
7	GG20025-001A-H	CORNER LABEL	(x2) [AV-21WH3]	
7	GG20012-001A-H	CORNER LABEL	(x2) [AV-21WS3 _{AU} , AV-21WX3 _A , AV-2178TEE]	

SERVICE NOTE :

This image shows a full page of blank white paper with horizontal ruling lines. The lines are evenly spaced and run across the width of the page, providing a template for writing or drawing. There are no margins, text, or other markings on the page.